

Bonhams



Lapidary Works of Art,
Gemstones and Minerals

Los Angeles | May 21, 2019



Lapidary Works of Art, Gemstones and Minerals

Los Angeles | Tuesday May 21, 2019 at 10am

BONHAMS

7601 W. Sunset Boulevard
Los Angeles, California 90046
bonhams.com

PREVIEW

Saturday, May 18, 12pm-5 pm
Sunday, May 19, 12pm-5 pm
Monday, May 20, 10am-5pm

SALE NUMBER

25497
Lots 800 - 1055

CATALOG

\$35

BIDS

+1 (323) 850 7500
+1 (323) 850 6090 fax

To bid via the internet please visit
www.bonhams.com/25497

Please note that bids must be submitted no later than 4pm on the day prior to the auction. New bidders must also provide proof of identity and address when submitting bids.

Please contact client services with any bidding inquiries.

Please see pages 115 to 118 for bidder information including Conditions of Sale, after-sale collection and shipment.

INQUIRIES

Claudia Florian, G.J.G
Co-Consulting Director
(323) 436 – 5437
Claudia.florian@bonhams.com

Katherine Miller
Business Administrator
(323) 436 – 5445
Katherine.miller@bonhams.com

ILLUSTRATIONS

Front cover: Lot 864
Inside front cover: Lot 839
1st Session page: Lot 801
2nd Session page: Lot 936
Inside back cover: Lot 856
Back cover: Lot 945

REGISTRATION IMPORTANT NOTICE

Please note that all customers, irrespective of any previous activity with Bonhams, are required to complete the Bidder Registration Form in advance of the sale. The form can be found at the back of every catalogue and on our website at www.bonhams.com and should be returned by email or post to the specialist department or to the bids department at bids.us@bonhams.com

To bid live online and / or leave internet bids please go to www.bonhams.com/auctions/254974 and click on the Register to bid link at the top left of the page.



Bonhams

220 San Bruno Avenue
San Francisco, California 94103
© 2019, Bonhams & Butterfields
Auctioneers Corp.; All rights reserved.
Bond No. 57BSBGL0808

ORDER OF SALE

Lapidary Works of Art	800-830
German Artists	800-808
Russian Artists	809-815
South American Artists	816-824
Chinese Artists.....	825-830
Minerals (listed alphabetically)	831-869
Native Metals.....	870-873
Exotic Pearls	874-881
Gemstones (listed alphabetically)	882-999
Mineral Décor (listed alphabetically)	1000-1055

NOTICE REGARDING BURMESE JADEITE AND RUBIES

Current law dictates that jadeite and rubies of Burmese origin and any articles of jewelry containing jadeite or rubies of Burmese origin may not be imported into the U.S. Certification that such jadeite or rubies were not mined in or extracted from Burma is required for importation of them into the U.S.

It is the responsibility of the buyer to investigate any applicable restrictions on purchased property and to obtain any export or import licenses and/or certificates as well as any other required documentation before shipping. The buyer's inability to export or import any such items or to do so timely shall not serve as the basis for any cancellation or rescission of the sale or any delay in payment. Prospective buyers who are uncertain as to whether a lot is subject to these restrictions or any other restrictions on importation or exportation are advised to consult with the specialist department in which the property is offered.

REGULATED SPECIES MATERIALS AND CITES PERMITS

The export of a lot from the United States or import into certain countries may be subject to export or import regulations, licensure and/or other restrictions; in particular, lots containing plant or animal materials such as ivory, rhinoceros horn, tortoiseshell, coral, whalebone or certain types of woods, irrespective of age or value, may require the granting of one or more export or import licenses or certificates, or may be banned from import altogether by some countries. Moreover, the ability to obtain an export license or certificate does not insure the ability to obtain an import license or certificate in another country. Lots that contain such regulated species materials may also not be eligible for exportation or for re-importation into the United States if they are not at least 100 years of age, and, under current law, lots containing African Elephant Ivory may no longer be re-imported into the United States regardless of age. In addition, resales of lots containing certain regulated species materials may be subject to restrictions in some jurisdictions.

Lots noted in the catalog with a **Y** next to the lot number contain one or more such regulated plant or animal materials. **It is the buyer's responsibility to investigate any such restrictions and to obtain any relevant export or import licenses. Please note that this process is governed by local authorities and may take considerable time. Regardless of any delay in the obtaining of an export or import license or certificate or denial of a license's or certificate's issuance, purchased lots shall be paid for in accordance with the Conditions of Sale, and any such delay or denial shall not serve as the basis for cancellation of any sale.** Prospective buyers are advised to obtain information from the relevant regulatory authorities regarding export and import restrictions, requirements, and costs prior to bidding.

Prospective buyers should also check with their local (e.g. state) regulatory authorities regarding any local restrictions and/or permit requirements that may apply with respect to purchases of regulated species materials, including without limitation purchases of items containing elephant ivory or rhino horn. For example, we are advised that New York buyers of any lot containing elephant or mammoth ivory or rhino horn will be responsible for obtaining a New York State permit before taking possession of the lot within New York State, and that the State of New Jersey has banned the import of items containing elephant or marine mammal ivory or rhino horn into that state.

Upon request, Bonhams can refer the purchaser to a third party agent to assist the purchaser in attempting to obtain the appropriate licenses and/or certificates. However, there is no assurance that any necessary licenses or certificates can be obtained. Please contact the Specialist Department for a suggested list of shipping agents prior to placing a bid if you are uncertain as to whether a lot is subject to export/import license or certificate requirements or related restrictions.

Lapidary Works of Art, Gemstones and Minerals





800



801



802

800

RUBELLITE TOURMALINE CARVING OF A COCKATOO

By Manfred Wild for Emil Becker

Idar-Oberstein, Germany

Reportedly inspired by a similar one made for the Sultan of Brunei, the present bird is carved from a single large specimen of rubellite tourmaline, weighing approximately 635.5 carats, with gold feet and comb and, diamond-set eyes and an indicolite tourmaline beak. The bird is perched upon a frosted rock crystal quartz branch, raised upon a polished Russian black obsidian based, rimmed with gold. Base signed with monogram signature EB for Emil Becker. Measuring 6 x 3 1/2 x 3 1/2 in (15.24 x 8.89cm x 8.89cm)

\$2,500 - 3,500

To be sold without reserve

801

WHITE DENDRITIC AGATE CARVING DEPICTING OWLS ON A QUARTZ BASE BY MANFRED WILD--"SNOWY OWLS"

Idar-Oberstein, Germany

Retailed by Asprey, London, England

Depicting a pair of snowy owls, rendered from white dendritic agate from India. They rest perched upon a natural rock crystal quartz base from Brazil. Signed EB for Emil Becker Height 8 in

\$1,200 - 1,800

To be sold without reserve

802 ^w

MULTI-GEMSTONE BIRD ON QUARTZ AND DOLOMITE BASE

Idar-Oberstein, Germany

Possibly depicting a Black-cowled Oriole or a Cacique, the large bird is naturalistically carved with white agate wings and red agate tail feathers. Raised on a base pink dolomite. Measuring 8 3/4 x 5 x 6 in (22.2 x 12.7 x 15.24cm)

\$1,000 - 1,500

To be sold without reserve



803

803
BLACK OBSIDIAN CARVING OF A BEAVER ON AN AMMONITE FOSSIL BASE

Idar-Oberstein, Germany,

Retailed by Asprey, London, England

Expertly carved to depict a beaver standing next to a “branch” with fine naturalistic texturing of the fur. The removable fossil ammonite cluster base forms a naturalistic landscape. *The bottom of the black obsidian beaver is signed Asprey. Measuring 7 1/2 x 11 x 7 in (19.05 x 27.9 x 17.7cm)*

\$700 - 1,000

804
THREE WHITE CHALCEDONY BEARS ON A QUARTZ CRYSTAL
circa 1960

Idar-Oberstein, Germany

Depicting a mother polar bear accompanied by two cubs with ruby cabochon eyes, perched upon rock crystal quartz point meant to suggest an ice flow. *Measuring 6 1/2 x 3 1/4 x 4 1/4in*

\$400 - 600

To be sold without reserve

805
AGATE BOX WITH GOLD VERMEIL FITTINGS

Idar-Oberstein, Germany

An antique box formed of translucent patterned agate, the top panel with beveled edge, having engine-turned decoration to the gold vermeil borders and four ball feet carved of agate. *Measuring 3 3/4 x 2 3/8 x 2 1/8in*

\$1,000 - 1,500



804



805



806

RHODONITE BOWL BY HELMUT WOLF

Idar-Oberstein, Germany

Of free-form outline, this spectacular bowl was carved from a single specimen of fine Russian Rhodonite with dramatic black veining.

Measuring 13 x 7 1/4 x 5in

\$2,500 - 3,500



807^w

MAGNIFICENT ROCK CRYSTAL QUARTZ BOWL BY MANFRED WILD

Idar-Oberstein, Germany

Retailed by Asprey

A very large, highly transparent boulder of rock crystal quartz would have been utilized to create this large decorative bowl. The art of bowl making is now one which has been virtually lost, due to the large degree of waste which is produced by carving away material and also due to the painstaking effort which it requires to achieve a uniform thinness of the sides to allow for the transmission of light.

Signed EB for Emil Becker. Measuring 18 x 13 1/2 x 8 3/4 in (45.7 x 34.2 x 22.2cm)

\$3,000 - 5,000

To be sold without reserve



808^w

**ROCK CRYSTAL QUARTZ REVERSE INTAGLIO CARVED
SCULPTURE BY BERND MUNSTEINER--"NATURE 1"**

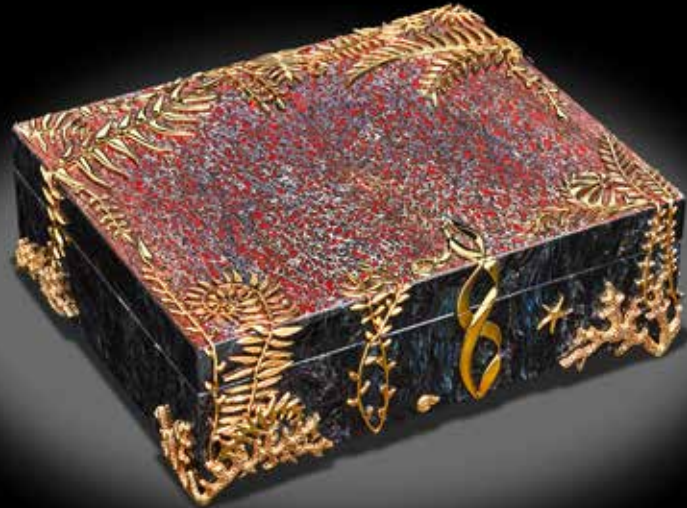
Idar-Oberstein, Germany

Emblematic of the distinctive style of the world-famous lapidary artist, Bernd Munsteiner, this is a monumental piece, carved from a single specimen of rock crystal quartz. The face is smooth polished as are the two sides to provide a view into the "inner world" of the quartz. The back of the sculpture is reverse intaglio carved with both triangular geometric decoration along the "spine" of the sculpture and also features "rough-hewn" incised carving which gives the impression of crystals once having been in the quartz which are now dissolved away. The rock crystal sculpture is removable from the frosted finish octagonal base, and sits in a fitted collar formed of silver. Height 17 1/2 in

\$6,000 - 8,000

Bernd Munsteiner

A relatively new art form in the lapidary world "fantasy cut" or fantasieschliffe as it is known in German, can follow the best attributes of the rough stone while eliminating or avoiding cleavage planes, internal flaws, and inclusions. Probably the most famous practitioner of this is the German stonecutter Bernd Munsteiner. The Munsteiner family (Bernd, Tom and Jutta) at Atelier Munsteiner have taken the boundaries of stone cutting to their limits with their endlessly imaginative shapes and forms. While using modern saws, grinders and polishers to create these fantasy cuts, this type of stone cutting brings back the lost art of "hand-cut" craftsmanship. The design is limited only to the cutter's imagination who must possess an intimate knowledge of a mineral's cleavage and optical or refractive properties in order to reveal the stone's natural beauty.



809

809

DINOSAUR BONE AND GOLD VERMEIL APPLIQUE INTARSIA BOX BY KONSTANTIN LIBMAN

This attractive and unique box is formed of gem-grade red dinosaur bone slabs originating from Utah. Flat polished to reveal the intricate cellular structure of the bone used in the lid is a single large cross-section slab which has been applied with a gold vermeil decoration in the form of ferns and coral at the feet. *Measuring 6 x 5 x 2 in*

\$4,000 - 6,000

810^w

MULTI-GEMSTONE FLOWER STUDY--"WOODLAND BERRIES AND FLOWERS"

A Russian flower study of very fine quality, consisting of six stems of flowers all of which are removable from the optically clear natural rock crystal vase. The berries are carved of the following Russian minerals: 7 of smoky quartz, 3 of Rhodonite and 2 of pale green Nephrite. Additionally, there are 4 rock crystal flowers with a frosted finish having diamond accents to the centers. There are also 5 golden buds and 18 nephrite leaves. The piece is copiously mounted with stems of 18K yellow gold as well as a base of 18K inset with cabochons of green and yellow smalta, a type of enamel developed by Fabergé, *height 5 1/2 in*

\$7,000 - 9,000



810



811



811 (detail)

**811
NEPHRITE AND GEM-SET EGG-FORM CARVING--"THE PANSY
EGG"**

Conceived in the style of Faberge, this table top ornament is designed in the form of an up-turned egg, carved from a large specimen of rich green Siberian nephrite, the base decorated with gilt-metal motif of oak leaves, accented with lines of small brilliants. The removable lid, with pansy-flower decoration embellished with small rubies and a citrine to the center of each, opening to reveal a heart-shaped, carnelian agate and gilt-metal decorated miniature picture frame, height 2 3/4in Height of egg overall: in (2)

\$7,000 - 9,000



812

**812
PUBLISHED GEMSTONE CARVING OF A DANCER FROM THE
MARLEZONSKI BALLE**

*By Svetlana Sediyeh
For the House of Fabergé Jewelry Salon
St. Petersburg, Russia*

Perhaps the greatest sign of the skill of the lapidary artist is in the execution of the white glove which holds the white handkerchief--cut from the same piece of rough--the handkerchief is moveable upon touch. The rest of the figure comprises a variety of gemstones, most of which originate in Russia and include the following: the hat carved of brown jasper with inset lapis lazuli head band accented with a faceted ruby and gold adornment; the face, carved of light brown jasper using the natural graduation in color of the mineral to suggest reddish ears; the wig, of grey quartzite; the collar, cuff, gloves and handkerchief and eyes of white kascholong opal; the jacket of brown brecciated jasper; the trousers, of green jasper; the socks of brown banded jasper, and the shoes of black obsidian. Raised on a circular red jasper base. This is a unique object, created as an edition of one. Height 8 1/4in

\$6,000 - 8,000

Accompanied by a certificate from the House of Faberge Gold Collection, St. Petersburg, Russia

Published in the book "K. Faberge and His Followers", by Valentin Skurlov, Tatiana Fabergé and Viktor Iluvin. Published 2009 by Leke Russia (Faces of Russia), St. Petersburg, Russia, page 586.



813^w

MONUMENTAL TIGER IRON MATRIX BOWL BY KONSTANTIN LIBMAN

Of monumental and impressive size, this large presentation bowl, was expertly carved from a single large piece of tiger's iron matrix from Western Australia. The edges are decorated with gilded decoration resembling a gold nugget, with a "claw-like" formation carved from rare blue hawk's eye quartz from South Africa. A gilt-metal strapwork adorns the underside of the bowl for added interest. This is a stunning lapidary work of art which is also functional created by an award-winning artist. *Diameter 24 in*

\$35,000 - 45,000



(detail)



814

814

BLACK OBSIDIAN BEAR

Carved from a single piece of Russian black obsidian, with naturalistic texturing of fur. On a removable malachite base of rectangular form. *Length of malachite base 5 3/4 in*

\$800 - 1,200



815

815

BLACK OBSIDIAN DRAGON-FORM BOX WITH GEMSTONES

By the House of Fabergé Jewelry Salon St. Petersburg, Russia Beautifully carved of midnight black Russian obsidian, the eyes inset with tiger's eye quartz cabochons, rimmed in gold. The neck mounted with 18K yellow gold and having a hinged closure with a rectangular-cut emerald as a thumb piece and 16 small diamonds inset to the collar. This is a unique object, created as an edition of one. *Length 4 1/4 in*

\$3,000 - 4,000

Accompanied by a certificate from the House of Fabergé Gold Collection, St. Petersburg, Russia



815 (detail)

816

**SUGILITE CARVING OF TWO OWLS BY
PETER MULLER**

Brazil

An impressive carving of large scale, each owl carved of rich purple sugilite, raised on a base of rubellite crystals on matrix, raised on a rectangular base. *Height 15 in*

\$8,000 - 10,000





817

AGATE AND OBSIDIAN CARVING OF PENGUINS BY PETER MULLER

Brazil

Depicting a penguin family of three rendered from agate and obsidian, raised on a specimen of white druzey quartz which gives the impression of a snowy landscape. *Height 13 ¼ in*

\$5,000 - 7,000



818^w

ROCK CRYSTAL QUARTZ CARVING OF A PEACOCK BY PETER MULLER

Brazil

A large scale carving of a male peacock with full tail feathers outstretched, with gold vermeil comb and feet, perched on an amethyst crystal mound, raised on a rock crystal quartz base. *Height 14 in*

\$7,000 - 9,000



819



820

819

LABRADORITE CARVING OF A KINGFISHER BY PETER MULLER

Brazil

Featuring a large gemstone carving made of Madagascar labradorite, the head of agate, the bird captured mid-flight while catching a small fish, perched on a rock crystal quartz base. Raised on a square base. *Height 17 in*

\$5,000 - 7,000

820

RHODOCHROSITE CARVING OF A DUCK

The duck carved from a single specimen of Argentinian rhodochrosite with black onyx head, with metal feet, on a slab of Chinese green fluorite displaying druzy edges. *Measuring 4 x 4 x 3 in*

\$500 - 700



821

821

TWO RHODOCHROSITE DUCKS

Each duck carved of bright red Argentinian rhodochrosite, one black onyx head, on gilt-metal feet raised on a druzy mineral base. *Measuring 5 x 3 x 3 1/4 in*

\$500 - 700



822

822

TWO RUBY BOWLS BY LUIS ALBERTO QUISPE APARICIO

Each carved from a single crystal of Tanzanian ruby, still retaining the hexagonal outlines of the original crystals. The first, weighing approximately 2556 carats (511.3 grams) and measuring 3 x 3 x 3 in; the second, of slightly lower form, weighing approximately 3406 carats and (681 grams) and measuring 2 3/8 x 4 1/2 x 3 1/2 in. (2)

\$6,000 - 8,000

823

CARVED RUBY PIG BY LUIS ALBERTO QUISPE APARICIO

Depicting a seated pig, carved from a single specimen of rich red Tanzanian ruby, adorned with coin motifs and armored decoration, a large ruby cabochon and a ruby coin decoration to the back. Weighing approximately 8241 carats (1648 grams) and measuring 8 1/2 x 4 x 4 1/2 in

\$6,000 - 8,000



823

824

RUBY-IN-ZOISITE FISH CARVING IN ROCK CRYSTAL BOWL BY LUIS ALBERTO QUISPE APARICIO

Depicting an marine-scape, comprising six carved ruby-in-zoisite fish atop a scene of "sea weed" rendered in gold vermeil rising from a bowl carved of light smoky quartz. Measuring 6 1/2 x 6 x 4 1/2 in

\$2,000 - 3,000



824



825

825
**BLUE QUARTZITE CARVING OF
DOLPHINS**

Carved of from a single specimen of natural bright blue Brazilian quartzite with the dolphins integral to the waves. Raised on a removable mineral base, on a shaped black onyx plinth. *Height 9 3/4 in*

\$1,500 - 2,000



826

826
**SERPENTINE CARVING OF TWO
LIZARDS**

Beautifully carved from a single specimen of Chinese serpentine, the rich hues of the mineral perfectly suited to the subject of reptiles. Raised on a base of black basalt carved and shaped to suit the outline of the specimen. *Height 10 in*

\$3,000 - 4,000



827 ^w

**AMETHYST AND BANDED AGATE
CARVINGS OF A PAIR OF PENGUINS**

Designed as a companion pair, these carvings make imaginative use of the mineral with the amethyst geode centers forming the stomach of the penguin and the banded agate section forming the head, feet and offspring. Raised on wood bases. *Height of each: 16 3/4 in*

\$5,000 - 7,000



828

828

GEMSTONE CARVING OF A CHEETAH

Comprised of fossil-bearing marble, carved into the form of a cheetah, the spots of the marble resembling the cheetah's spots.

Length 11 1/2 in

\$1,800 - 2,500



829

829

THREE SPHALERITE CARVINGS

The first, a carved figure of Buddha, *weighing 143.5 carats, height 3.2 cm*; the second, an owl, *weighing 85.0 carats, height 2.6cm*; and the third, an elephant, *weighing approximately 207.0 carats, length 4.3 cm.*(3)

\$900 - 1,200



830

830

ANTIQUE SAN DIEGO TOURMALINE CARVING OF A HORSE ON WOODEN STAND

Old Chinese carving depicting a recumbent horse with small monkey at his feet, carved of fine quality hot pink tourmaline having a good degree of transparency. *Weighing approximately 614.0 carats (122.8 grams) and measuring 2 1/4 x 1 1/2 x 1 1/4 in*

\$4,000 - 6,000

Offered on a custom-fitted wooden stand.



831

MINERALS

831^w

LARGE AGATE SLAB ON STAND

Brazil

A beautiful agate cross-section slab, which still retains its natural boulder edge all around, with rich carnelian at the edges and a druze of quartz to the interior. *Measuring 20 x 16 x 3/4 in*

\$500 - 700

Offered with a custom-fitted black metal stand.

832^w

VERY LARGE GREEN APOPHYLLITE

Poona, India

Green apophyllite, a potassium calcium silicate, in association with calcite and orange stilbite forms a large decorative specimen. *Measuring 18 x 11 x 16in*

\$800 - 1,200



832



833



835



834

833

BERYL VAR. EMERALD

Chivor, Colombia

A single complex crystal consisting of multiple conjoined sections. Having excellent, well-saturated vivid green color, good transparency and a lustrous termination. *Weighing approximately 25.48 carats (5.1 grams) and measuring 20.18 x 15.92 x 11.33 mm*

\$2,000 - 3,000

834

BERYL VAR. AQUAMARINE

Shielova Gora, Adon-cholon Range, Merchinsk Gem Mine, Nerclinsk, Chitinskaya, Oblast, Tranbaikalia, Easter Siberian Region, Russia

A large cluster of double-terminated aquamarine crystals, comprising numerous slender vertical crystals conjoined and with three to four crystals in a horizontal position which probably started life as vertical terminations but broke and were naturally rehealed. With excellent saturation of color and striated sides. *Measuring 6 x 2 x 1 1/2 in*

\$4,000 - 6,000

835

BERYL VAR. AQUAMARINE

Brazil

This fine single, hexagonal crystal, with a lustrous termination and striated sides and a rich sea greenish blue color with excellent transparency. *Measuring 2 x 1 3/4 x 3/4 in*

\$1,000 - 1,500



836

VERY LARGE BERYL VAR. HELIODOR

Wolodarsk Wolynskii, Ukraine

A mineral classic, this very large single crystal is exemplary for its hexagonal habit. The faces having complex, stepped growth and the transparency is very high, particularly for the species of Beryl. This offering would make a notable addition to any serious mineral collection. *Weighing approximately 355.5 carats (671.1 grams) and measuring 6 1/4 x 2 1/4 x 2in*

\$55,000 - 75,000



837

837

BERYL VAR. AQUAMARINE

Gilgit, Pakistan

A single water-clear crystal of aquamarine having vitreous surfaces and an excellent hexagonal form with well-formed termination.

Measuring 2 x 5/8 x 4/8 in

\$700 - 900

Provenance: Purchased from Gregory, Bottley & Lloyd, Mineralogists & Geologists, London, England.

838A

MAINE AQUAMARINE IN MATRIX

Maine, USA

Comprising a long hexagonal crystal of bright blue aquamarine, *length 3in*, in a quartz matrix with associated feldspar. *Measuring 4 3/4 x 4 1/2 x 3in*

\$400 - 600



838A



839

AQUAMARINE CLUSTER WITH MUSCOVITE

Pakistan

This beautiful specimen is notably rare. Seldom does one find such a massive number of terminated aquamarine crystals in such a concentrated area much less a total of 58 terminated crystals that are sharp, well-defined and clear. They are imbedded in a cluster of bladed muscovite crystals, a name given to the mineral due to its use in medieval Russia as a cheaper alternative to glass in windows. *Weighing 7 pounds (3.18 kg) and measuring 10 x 8 1/2in (25 x 21.3 cm)*

\$20,000 - 30,000

Accompanied by a custom-fitted acrylic base.

840^w

EMERALD IN MATRIX SPECIMEN

Kagem Mine, Zambia, Africa

This spectacular specimen from Zambia displays multiple Emerald crystals still embedded in their surrounding matrix with numerous Schorl crystals dotting the surface. Weighing approximately 21.5 kilos. Measuring 21 x 12 x 7 in

\$40,000 - 50,000

A similar example from Zambia is displayed in the Hall of Gems at the Smithsonian, Washington, DC.





841

841

CELESTITE

Madagascar

A classic geode of vug form displaying excellent hound's tooth formation crystals of bright blue color having very good luster. Weighing approximately 15.8 lbs (7.2 kilos) and measuring 10 x 5 1/2 x 6 in

\$800 - 1,200

To be sold without reserve

842

CHRYSOCOLLA ON MALACHITE

Democratic Republic of Congo

A large display specimen showing botryoidal formation and vivid color with a thick layer of chrysocolla overgrowth over malachite. Measuring 10 1/2 x 7 1/2 x 5 in

\$1,500 - 2,000



842



843



844

843
IMMENSE RUBY CRYSTAL

India

A massive, robust single crystal of ruby which is nearly as wide as it is tall, having a rich purplish-red color and classic, hexagonal habit. *Weighing 9.8 lbs (4.5 kilos) and measuring 8 1/2 x 6 1/2 x 6 1/2 in*

\$1,500 - 2,000

Provenance: Ex. Will Heierman Collection



845

844
CORUNDUM CRYSTAL

near the town of Prilep, Former Yugoslavian Republic of Macedonia

The Ottoman Turks actively mined the only known European rubies at this location for nearly 300 years after their conquest of the region in the year 1389. Due to the mainly opaque nature of the ruby from this locality most of the stones were used for decorative purposes to adorn daggers, swords, armor and turbans of the pashas and high ranking Turkish officials. Present day production is very sporadic and accidental finds are associated with the mining of dolomite marble at the quarry near the town of Prilep. The present offering is a huge pinkish-red single crystal of ruby of hexagonal outline. *Weighing 9592.5 carats (1918 grams) measuring 4 x 4 x 3 1/2 in*

\$1,500 - 2,500

Provenance: Ex. Will Heierman Collection



846

845
WHITE SAPPHIRE--"THE ROCKET SHIP"

Rathnapura, Sri Lanka

Predominantly white sapphire with slight hints of pale blue to the core, this is a well-terminated hexagonal crystal with smaller conjoined crystals to the base. *Weighing approximately 182.5 carats (36.5 grams) and measuring 2 x 1 1/4 x 1/2 in*

\$1,000 - 1,500

Provenance: Ex. Lawrence Conklin Collection

846
RUBY CRYSTAL CLUSTER-- "THE BIRD'S NEST"

Chumar Mine, Ganash Himal, Nepal

A fascinating complex cluster of intergrown, tapering ruby crystals of varying sizes. *Weighing approximately 529.5 carats (105.7 grams) and measuring 3 x 2 x 2 in*

\$1,500 - 2,000

Provenance: Ex. Will Heierman Collection

847

IMMENSE RUBY CRYSTAL

Karnataka, Subramaniam, Red Mountain, India

An immense hexagonal crystal, having rich purplish-red color, with successive layers of crystallization clearly visible. *Weighing approximately 15,182.0 carats (3036 grams) and measuring 7 x 3 1/2 x 3 1/2 in*

\$1,200 - 1,500

Provenance: Ex. Will Heierman Collection



847



848

848

RUBY CRYSTAL

Somalia

A complex cluster of conjoined hexagonal crystals of bright red color with minor translucency. *Measuring 2 x 1 1/2 x 1 3/8 in*

\$1,500 - 2,000

Provenance: Ex. Will Heierman Collection

849

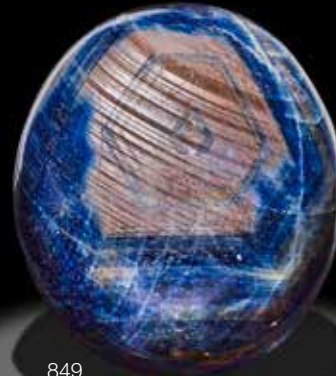
IMMENSE STAR SAPPHIRE CABOCHON

Orissa, India

A table top or cabinet specimen, this very, very large cabochon has predominantly blue body color with some brown visible to the center and a clear pattern of color zoning visible. An indistinct star can be seen on the apex. *Weighing approximately 10,908 carats (2181.6 grams) and measuring 4 1/2 x 3 3/4 x 3 in*

\$3,000 - 4,000

Provenance: Ex. Will Heierman Collection



849

850

RUBY-IN-FUSCHITE

John Saul Mine, Mangari, Voi, Kenya

A bright red cluster of intergrown ruby crystals having dramatically contrasting vivid green fuschite associated. *Measuring 2 1/4 x 1 3/4 x 1 1/4 in*

\$1,000 - 1,500

Provenance: Ex. Will Heierman Collection



850



851



852



853



854

851

SAPPHIRE CRYSTAL

Brazil

Of flattened form, this large hexagonal crystal of sapphire is typical for those originating from Brazil. *Weighing approximately 8612 carats (1722 grams) and measuring 5 1/4 x 4 3/4 x 1 1/2 in*

\$600 - 800

Provenance: Ex. Will Heierman Collection

852

CORUNDUM CRYSTAL

Dattaw Mine, Mogok, Burma

A multi-color sapphire variety of Corundum, with conjoined crystals having hues of blue, purple, pink and orangey-yellow, with a glossy natural luster. *Weighing approximately 940.0 carats (188.0 grams) and measuring 2 1/2 x 2 1/4 x 1 1/2 in*

\$1,200 - 1,500

Provenance: Ex. Will Heierman Collection.

853

BLUE AND WHITE SAPPHIRE

Kono, vic. Sefadu, Sierra Leone

A large single crystal, capable of standing on its own, weathered and worn smooth by the elements, displaying blue and white color banding. *Measuring 4 1/2 x 3 x 3 1/2 in*

\$1,500 - 2,000

Provenance: Ex. Will Heierman Collection

854

RUBY CRYSTAL

Borderlands of Kenya, Uganda

A large, slightly amorphous mass of purplish-red ruby. *Weighing approximately 808.0 carats (161.7 grams) and measuring 3 x 2 x 1 1/2 in*

\$1,200 - 1,500

Provenance: Ex. Will Heierman Collection.



855

855
MELANOPHLOGITE PSEUDOMORPH ON BLUE CHALCEDONY

Namibia

Comprising blue inter-grown cubic crystals with white overgrowth.
Measuring 4 x 3 x 2 in

\$1,200 - 1,500



856

856
RARE JEWEL-LIKE DIOPTASE

Mindouli, Pool Department, Republic of Congo (Brazzaville)

This is a rare form of diopside of botryoidal form, most likely a cast over another mineral, entirely covered with jewel-like crystals of vivid emerald green color. This is a mineralogically and aesthetically important specimen. *Measuring 4 1/4 x 3 1/2 x 1 in*

\$2,000 - 3,000

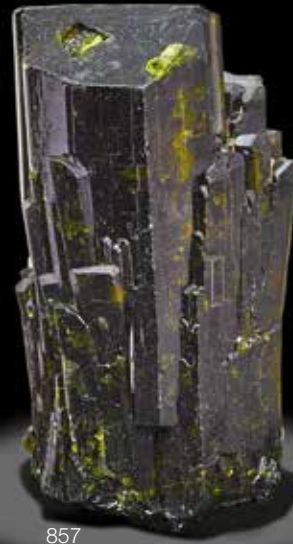
857
EPIDOTE

Prince of Wales Island, Alberta

Comprising a large single crystal with a group of smaller conjoined crystals, and tiny associated quartz crystals. Well-terminated and with good luster and characteristic deep blackish-green color. *Measuring 2 x 1 x 1 in*

\$400 - 500

Provenance: Ex. Collection Eugene E. Schlepp, Tucson, Arizona



857



858

858

LARGE YELLOW FLUORITE

Yllabona, Asturias, Spain

A large specimen with a mound formation, entirely covered in bright yellow cubic crystals having excellent luster. *Measuring 12 x 7 x 5 in*

\$900 - 1,200

Provenance: Ex. Tom Wiesner Collection

859

PYRITE SPECIMEN

Peru

A impressive and highly decorative specimen comprising numerous inter-grown, lustrous crystals of pyrite. *Measuring 10 x 9 x 5 in*

\$700 - 900



859



860

860

AMETHYST CRYSTAL POINT

Maraba, Brazil

A single large hexagonal crystal point which shows a good termination that is well-defined. Strength of color is the other distinguishing feature of this large cabinet-sized specimen. *Measuring 6 1/2 x 5 1/2 x 4 in*

\$2,500 - 3,500



861

861

"LIGHTNING STRUCK" QUARTZ--A MINERALOGICAL CURIOSITY"

Diamantina, Minas Gerais, Brazil

For many years, itinerant miners in of the Serra de Espinhaco Mountains of Brazil have reported finding "flash stones" - now demonstrated to be the result of lightning traveling through a quartz crystal while still in the ground. The Espinhaco range is frequently hit by orographic thunderstorms, which produce the greatest number of lightning strikes. The stresses caused by this very rapid heating and cooling, along with the intense electrical charge and the high pressure, creates a characteristic zig-zag fracture pattern on the surface of the affected quartz crystals.

The present specimen has clearly visible shallow zig-zag lightning tracks on the surface. *Measuring 11 x 7 x 3 in*

\$1,000 - 1,500



862

862

RHODOCHROSITE

11600 Bench, Climax Mine, Fremont Pass, Lake County, Colorado

A single, large rhombohedron of rhodochrosite with glossy faces showing an attachment of pyrite at the base. *Measuring 1 1/2 x 1 3/8 x 1 in*

\$1,000 - 1,500



863

863

RHODOCHROSITE "PINCUSHION"

Wessels Mine, South Africa

A pin cushion cluster of beautiful, lustrous pinacoidal-form strawberry-red crystals in a mound formation. *Measuring 2 1/4 x 1 3/4 x 3/4 in*

\$1,200 - 1,500



864

864
MAGNIFICENT KUNZITE CRYSTAL

Brazil

A large single crystal reminiscent in form to a mountain scape, this precious specimen appears virtually gem-grade and facet quality throughout. *Weighing approximately 1041.8 grams (5209 carats) and measuring 6 x 4 x 3in*

\$7,000 - 9,000



865

865
SELENITE

Naica, Chihuahua, Mexico

A small cabinet-sized specimen of selenite wands of an unusual green hue, with excellent transparency, having good terminations. *Measuring 5 x 3 1/2 x 2 1/2in*

\$1,500 - 2,000

Provenance: Purchased from The Collector, Fallbrook, CA



866

LARGE RUBELLITE TOURMALINE FROM THE "CRANBERRY POCKET"

Cruzeiro Mine, Minas Gerais, Brazil

This 10.53 pound single Rubellite Tourmaline crystal is an aggregate of parallel crystals, most of which are individually terminated. This specimen shows over sixty-five terminations measuring from 2 mm to 25 mm. Each termination shows a deep rich red color. This crystal is one of the survivors of the collapsed "cranberry pocket" where many specimens became material for master gem cutters. The smooth surfaces of this crystal are readily identifiable as the part of the crystal

that was attached to the pocket wall. This specimen is strikingly beautiful and is being shown publicly for the first time. The words Minas Gerais brings a sense of wonderment and excitement to mineral collectors all over the world. This state in Brazil has produced phenomenal mineral specimens that occupy shelves in all the finest museums. One mine in Minas Gerais known as "Cruzeiro" was initially mined for mica in the early 50s but later that decade until now, it became famous worldwide for its Tourmaline, Beryl and Quartz production. After a lull in the early 2000s when poor production and high cost threatened the existence of the mine but that all changed

abruptly. September 2013 saw the discovery of the now famous "Cranberry Pocket". When the pocket was discovered it was immediately known that it had collapsed.... perhaps a million years before. But many of the finest mineral treasures were intact and it took four arduous weeks to carefully collect the specimens of which this present offering is the largest and best. *Weighing approximately 10.5 lbs (4.7 kilos) and measuring 11 X 7 in (28 x 13 cm)*

\$80,000 - 100,000



867



868

867

TOURMALINE VAR. SCHORL

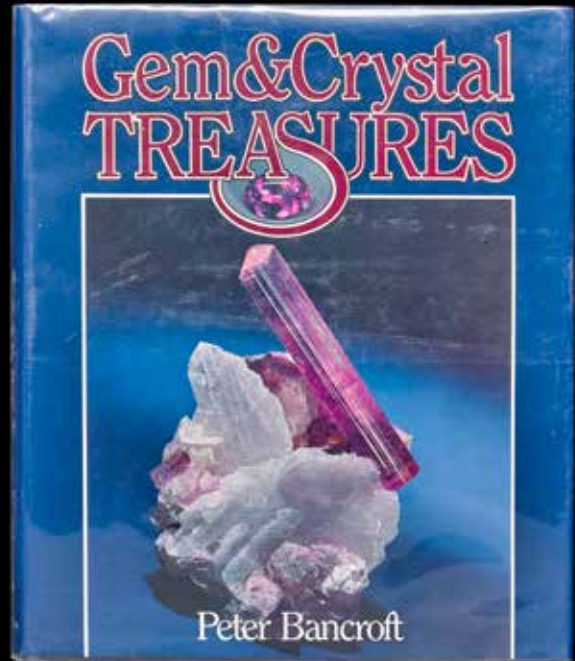
Erongo Mountains, Namibia

Comprising two large crystal cluster, with numerous smaller crystals, and displaying a large, natural termination with a lustrous face.

Weighing approximately 1294 grams and measuring 5 x 5 x 3 1/2 in

\$700 - 900

To be sold without reserve



869

868

TURQUOISE NUGGET

Kingman Mine, Arizona

A large fist-sized nugget of rich blue color, having brown matrix visible, with a polished window at the base which was created to reveal the hue of the interior. Suitable for being retained as a cabinet specimen or for use in cutting individual cabochons or carving. *Weighing approximately 1494.5 carats (298 grams) and measuring 3 3/4 x 2 1/4 x 1 1/2 in*

\$1,000 - 1,500

869

GEM AND CRYSTAL TREASURES BY PETER BANCROFT, SIGNED COPY

Dr. Bancroft provides the reader with 100 field trips to many of the world's most exotic gem and mineral localities. There is a review of the discovery and earliest days of mining at each deposit. Six hundred sixty-seven illustrations accompany an incredible amount of historical background information on each of these important mineral and gem producing localities. Over 320 crystallized mineral and gemstone treasures and specimens are depicted in full color. Each mineral specimen has been selected as one of the choicest examples available, worldwide - specimens pictured are from some of the world's most notable mineralogical / gemological museum displays, as well as from the collections of private individuals. The mineral photographs are augmented by photos of exquisite gemstone carvings, faceted gems, and stunning jewelry made from the gemstones found at these localities. *Published by Western Enterprises Mineralogical Record Book, Fallbrook, California, 1984. Signed and dedicated.*

\$400 - 500

To be sold without reserve



870

870

VERY LARGE NATIVE SILVER

Zinkgruvan Mine (Åmmeberg Mines), Zinkgruvan, Askersund, Örebro County, Sweden

Mined in the 1970s, this is probably one of the largest silver specimen originating from a private collection from this mine. Weighing approximately 494 grams. Width 9 1/2 in (240mm)

\$9,000 - 12,000

Provenance: Ex Peter Lyckberg Collection. Peter Lyckberg is a lifelong mineral collector, researcher, author, lecturer in geology, mineralogy, gemology from Sweden. A well known lecturer for the past 32 years, he has published over 50 mineralogical papers in professional journals and written a dozen chapters in books.

871

CRYSTALIZED SILVER SPECIMEN

Colorado

Of typical branching form, the specimen gives the appearance of a much larger piece due to the wide spread of its "fern-like" or dendritic branches. Weighing approximately 3.2 grams and measuring 1 1/2 x 1 x 1/4 in

\$700 - 1,000

To be sold without reserve



871



872



873

872

NATIVE COPPER ON WOODEN BASE

Knowlton Amygdaloid, Caledonia Mine, Ontonagon County, Michigan
Collected in the 1950s, this robust, copper ore shows excellent crystallization and arborescent form as well as a nice patina. *Height 11 1/2 in*

\$1,000 - 1,500

873

SILVER IN MATRIX SPECIMEN

Imiter, Zgrounder, Quarzazate, Bleida, Morocco
The virgin white quartz displays fine dendritic crystallization of silver. *Measuring 3 x 2 x 1 3/4 in*

\$600 - 800

Exotic Pearls and Unmounted Gemstones



874

PURPLE NON-NACREOUS PEARL--“QUAHOG PEARL”

Mercenaria mercenaria
Northern Quahog clam species
Coastal waters of the North Atlantic

A bouton pearl characterized by a purple color graduating to a lighter purple at the base, *undrilled*. Weighing approximately 20.85 carats and measuring 15.84 x 11.29 mm

\$10,000 - 15,000

Accompanied by a Gemological Institute of America report number 2191678385 dated October 2, 2018 stating that the 20.85 carats pearl shows no indications of treatment.

875

LARGE, LAVENDER NON-NACREOUS PEARL--“AN AMERICAN QUAHOG PEARL”

Mercenaria mercenaria
Northern Quahog clam species
Coastal waters of the North Atlantic

Described by Linnaeus in 1758, the Quahog pearl does not come from an oyster but rather a thick-shelled edible member of the clam family. Depending on their size they are sometimes marketed as “littlenecks” if they are smaller, “cherrystone” if they are medium-sized or “quahogs” if they are larger. They are also known as “chowder” clams. One of the longest-lived North American bi-valves, its life expectancy is sometimes greater than 40 years.

It is estimated that only 1 in 100,000 Quahog clams actually produce a pearl of any kind and most are too unattractive for use in jewelry. Before its use in jewelry, the Quahog was used as the nation’s first domestic currency. The Wampanoag tribe used a medium of exchange called wampum which consisted of beads made of the shell of the Quahog bivalves.

The rarest Quahogs are those which are a true purple—and these are found only in New England. Actually a “calcareous concretion”, Quahogs are similar to pearls in that they are started by a parasite. However, the purple stain of the Quahog colors the pearl, not the nacre, in much the same way that a conch pearl is created.

The present offering is a bouton pearl with a classic circular shape, having a high dome suffused with an attractive lavender color and exhibiting extremely high luster, *undrilled*. Weighing approximately 20.66 carats and measuring 15.8 x 15.8 x 11.3mm

\$3,000 - 5,000

876

MULTI-STRAND NATURAL PEARL NECKLACE

Pinctada mazatlanica
Baja California

A fifteen strand torsade necklace consisting of graduated cream/white and iridescent purplish/pinkish grey and grey/black, mixed size pearls graduating from 6.3-6.7mm to 1.6mm, completed with a 14K yellow gold clasp. Total aggregate weight 436.5 carats (87.3 grams). Length 15in

\$1,500 - 2,000

Accompanied by a Gem & Pearl Laboratory Limited report, 43 Kirby Street, London, EC1N 8TE, England stating that there was an extensive sample of natural saltwater pearls with two freshwater cultured pearls and that there is no evidence of treatment.

877

NON-NACREOUS PEARL AND DIAMOND RING

Melo melo
South Pacific

Centering on a pastel orange *Melo melo* pearl, weighing approximately 4.0 carats in a two-tier surround of nearly 0.64 carats of diamonds, mounted in 14K yellow gold, size 8.

\$2,500 - 3,500

878^Y

DROP-SHAPED NON-NACREOUS WHITE PEARL

Tridacna gigas or “Giant Clam”
Pacific Ocean

Having excellent drop shaped form and a sharp, flame pattern iridescence. Weighing approximately 5.76 carats and measuring 12.78 x 8.25mm

\$900 - 1,200

879^Y

WHITE NON-NACREOUS PEARL WITH EXCEPTIONAL FLAME

Tridacna gigas or “Giant Clam”
Pacific Ocean

Of oval outline, having great translucency and an exceptional flame pattern iridescence. Weighing 10.09 carats and measuring 12.32 x 10.29mm

\$1,500 - 2,500

880^Y

DROP-SHAPED NON-NACREOUS WHITE PEARL

Tridacna gigas or “Giant Clam”
Pacific Ocean

This fine drop-shaped pearl has excellent flame pattern iridescence. Weighing approximately 6.39 carats and measuring 12.18 x 8.31mm

\$1,000 - 1,500

881

ORANGE NON-NACREOUS PEARL AND DIAMOND BROOCH

Melo melo
South Pacific

A drop-shaped pearl, weighing approximately 10.26 carats, accented with diamonds, mounted in 14k yellow gold. Height 2 3/4 in

\$4,500 - 6,500

GIT cert#180612008001



878



874



876



877



881



875



880



879



882



885

882

LARGE AMETHYST

Brazil

A beautiful emerald-cut stone with excellent proportions, having a grape violet hue, as well as excellent transparency and luster. *Weighing approximately 71.33 carats and measuring 28.48 x 21.95 x 16.03mm*

\$700 - 1,000

883

RICH VIOLET AMETHYST--"A MEMBER OF THE 100 CARATS CLUB"

A well-cut cushion-shaped amethyst of deep violet hue, having excellent transparency and luster. *Weighing approximately 111.42 carats and measuring 34.04 x 26.95 x 18.38mm*

\$1,200 - 1,500

884

MAGNIFICENT CITRINE

Brazil

Having traditional brilliant-cut faceting to the crown and laser-cut incised lines to the pavilion, this is a rich, deep orangy-yellow hued citrine. *Weighing approximately 76.5 carats and measuring 33.30 x 24.02 x 17.49 mm*

\$700 - 1,000

885

LARGE AMETRINE--"A MEMBER OF THE 100 CARATS CLUB"

Brazil

Faceted as an emerald-cut with a clear demarkation line of zoning between the citrine portion which covers about 3/4 of the stone versus the amethyst section which covers about 1/4 of the stone. *Weighing approximately 143.48 carats and measuring 32.66 x 33.84 x 18.94mm*

\$1,500 - 2,000

886

LEMON CITRINE--"A MEMBER OF THE 100 CARATS CLUB"

Brazil

Vivid yellow in color, the present emerald-cut citrine has a pleasing hue, excellent transparency and luster. *Weighing approximately 130.5 carats and measuring 35.22 x 27.13 x 19.65mm*

\$500 - 700

To be sold without reserve



883



884



886



887

887

FANTASY-CUT AMETHYST--“A MEMBER OF THE 100 CARATS CLUB”

Brazil

A fine pentagonal-shaped amethyst, nearly-optically clear violet-hued amethyst which has been reverse carved with a fascinating arrangement of bubble-shaped motifs. *Weighing approximately 146.29 carats and measuring 46.44 x 38.62 x 14.39mm*

\$500 - 700

888

GREEN AMETHYST LEAF-FORM CARVING--“A MEMBER OF THE 100 CARATS CLUB”

Brazil

To be mounted either as a unique pendant or brooch, or simply retained as a cabinet specimen, this is a large example of quartz which was heat enhanced to create a vivid green reminiscent of the color of a leaf. Simply carved to the front with a striated pattern fitting its subject matter, the reverse side was left polished with only two surfaces to reveal the high degree of clarity of the quartz. *Weighing approximately 106.0 carats and measuring 52.3 x 25.9 x 13.03mm*

\$1,500 - 2,000

889

LARGE AMETHYST--“A MEMBER OF THE 100 CARATS CLUB”

This very large oval-cut amethyst possesses excellent clarity, luster and a rich violet hue. With a brilliant cut faceted crown and overall checkerboard faceting on the pavilion. *Weighing approximately 206.5 carats and measuring 44.69 x 34.76 x 23.68 mm*

\$2,000 - 3,000



888



889



890

AMETHYST AND QUARTZ “GRAPE CLUSTER” EARRINGS

Of tapering form, each comprising micro-faceted beads, graduating from near-colorless at the top to pale lavender, then rich violet at the bottom. *Total weight approximately 60.55 carats. (2)*

\$500 - 700



891
APATITE
Afric

This spectacular stone is faceted as a Portuguese cut circular brilliant which best displays the fire and brilliance of this gem quality stone.
Weighing approximately 23.30 carats and measuring 16.8 x 12.38mm

\$2,000 - 3,000

892
APATITE
Africa

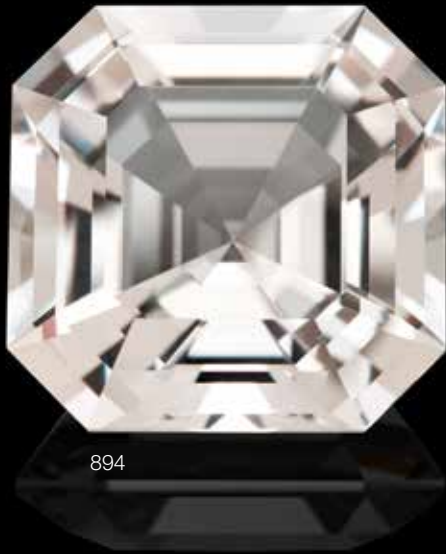
This is a gem-quality blue apatite, a cushion-cut stone that features a faceted girdle and checkerboard faceting to the pavilion to provide it with an added measure of scintillation. *Weighing approximately 25.08 carats and measuring 18.04 x 14.42 x 12.46mm*

\$2,500 - 3,500

893
APATITE BEAD NECKLACE
Africa

Comprising seven strands of polished 6mm spherical beads of bright blue color with good transparency for the species, completed by a silver clasp, *length 17 1/2 in.*

\$600 - 800



894

BERYL VAR. GOSHENITE

Mozambique

The colorless variety of beryl—goshenite—is rare. The present Ascher-cut colorless stone displays exceptional faceting giving it an even more scintillating appearance. Large Goshenites, such as this one, are difficult to find in the market as most stones are never seen above the 20 carats size. *Weighing approximately 42.07 carats and measuring 21.5 x 21.5 x 14.10mm*

\$4,000 - 6,000

895

GOLDEN BERYL

Brazil

An outstanding, cushion-shaped golden yellow beryl with exceptionally high clarity and superb luster. *Weighing approximately 57.61 carats and measuring 27.3 x 23.22 x 17.04mm mm*

\$1,200 - 1,800

896

LARGE AQUAMARINE CABOCHON--“A MEMBER OF THE 100 CARATS CLUB”

Brazil

A sugarloaf cabochon with a high dome, this large aquamarine has well-saturated color and would be suitable for mounting as a pendant. *Weighing approximately 102.25 carats and measuring 27.44 x 25.49 x 17.05mm*

\$1,000 - 1,500

897

GREEN BERYL AND AQUAMARINE NECKLACE

Brazil

Comprising 25 polished beryl beads of both green beryl and aquamarine, *weighing altogether 700 carats*, many of octagonal outline, completed by a diamond-set 18K white gold ball clasp, *length 17 1/2 in.*

\$2,000 - 3,000

Accompanied by a Gemological Institute of America report numbered 120603439 dated February 8, 2019 stating that random testing of the beads resulting in natural Beryl var. Aquamarine and natural Beryl var. Green Beryl.

898

GOLDEN BERYL

An elongated hexagonal-cut heliodor of exceptional beauty having excellent clarity and luster. *Weighing approximately 27.70 carats and measuring 23.22 x 16.33 x 10.92mm*

\$1,000 - 1,500

899

VERY FINE AQUAMARINE

Brazil

Optically clear, with stunning luster, this beautiful aquamarine was cut from a single large water-clear crystal of astonishing size. Of suitable size for mounting as a pendant or to be retained as a collector's specimen to be admired. *Weighing approximately 65.22 carats and measuring 41.56 x 14.84 x 13.09mm*

\$8,000 - 10,000





896



897



898



899



900

GREEN BERYL--“A MEMBER OF THE 100 CARATS CLUB”

This is a world-class green beryl which has been expertly cut into a pear-shape to best display its high degree of clarity. The leaf-green color is exceptionally attractive. This is an important stone which could form the centerpiece of any large gemstone collection. *Weighing approximately 498.12 carats and measuring 75.06 x 49.51 x 31.59mm*

\$12,000 - 15,000

Accompanied by an American Gemological Laboratories report numbered 1085207 and dated July 26, 2017 stating that the 498.12 carats green beryl is natural and that it shows no gemological evidence of enhancements or treatments.



901

EXCEPTIONAL AQUAMARINE--“A MEMBER OF THE 100 CARATS CLUB”

Espiritu Santo, Brazil

This stunning aquamarine is in a class by itself due to the combination of large size, exceptional luster and exceptional clarity. Faceted as a cushion-shape the stone is not too large to be worn as a pendant, but could also be retained as a cabinet piece to form the centerpiece of any significant gemstone collection. *Weighing approximately 481.20 carats and measuring 48.61 x 46.13 x 32.82mm*

\$80,000 - 100,000



902

902
HEART-SHAPED EMERALD

Ethiopia

This fine emerald has an excellent saturation of green of vivid green unmodified by any secondary colors. It has been faceted as a heart-shape to best reveal the high degree of clarity. The luster of the stone is excellent. *Weighing approximately 4.29 carats and measuring 11.03 x 12.08 x 5.58 mm*

\$15,000 - 20,000

Accompanied by an American Gemological Laboratories report numbered 1100587 dated April 19, 2019 stating that the 4.29 carats green heart-shaped emerald has only minor traditional clarity enhancements.



903

903
FINE EMERALD

Bahia, Brazil

This beautiful emerald is faceted as an oval mixed cut display a fine, rich green color unmodified by yellow. The color is vibrant and well-saturated, yet not too dark in tone. This is a fine gem emerald suitable for the knowledgeable collector. *Weighing approximately 4.65 carats and measuring 12.69 x 9.57 x 7.16mm*

\$10,000 - 15,000

Accompanied by an American Gemological Laboratories report number 1089948 dated January 24, 2018 stating that the natural beryl var. emerald of 4.65 carats originates from Brazil and that it shows only insignificant to minor traditional (oil or parafin-type) clarity enhancement to reduce the visibility of fissures.



904

SUITE OF THIRTY-TWO RHODOLITE GARNETS

Africa

Suitable for mounting as a necklace, earrings and ring. The necklace layout, with twenty-seven oval-cut stones, *weighing altogether 150.5 carats*, the largest of which weighs 14.20 carats and the smallest weighing 2.86 carats. The earring layout, with four stones, comprising both ovals and circular-cuts, the largest circular-cut, *weighing 4.94 carats*, the four stones with a total weight of 17.0 carats. The single large oval-cut garnet which is suitable for mounting as a ring, *weighing approximately 9.44 carats*. Total weight approximately 176.94 carats (32)

\$9,000 - 12,000



905

905

CLASSIC DEMANTOID GARNET

Ural Mountains, Russia

This exemplary stone exhibits the most desirable characteristics of the species, a vivid green color, excellent luster and high dispersion. Weighing approximately 2.64 carats and measuring 8.24 x 5.38 mm

\$10,000 - 12,000



906

906

RED SPESSARTITE GARNET

Nigeria

A large, circular-cut stone having an exceptional red hue with a hint of orange. Both the color, transparency and luster make this a distinguished stone. Weighing approximately 37.0 carats and measuring 19.21 x 12.74mm

\$2,500 - 3,500



907

907

DEMANTOID GARNET RING

Ural Mountains, Russia

Centering on a circular-cut, vivid green demantoid garnet, weighing approximately 2.28 carats, mounted in 14K yellow gold, accented with 0.25 carats of small circular-cut demantoid garnet accents to each shoulder, with Russian hallmarks, stamped 585, size 10.

\$12,000 - 15,000

Accompanied by a Moscow State University Gemmological Center report numbered D260451 dated December 17, 2018 stating that the 2.28 carats demantoid garnet is natural and that it originates from the Ural deposits of Russia.



908

SPESSARTITE GARNET NECKLACE SUITE

Namibia

Comprising thirty-seven vivid orange spessartite garnets of the hue which those in the gem trade call "Fanta orange". Such a well-matched suite of circular-cut brilliants would have taken years of high-grading to collect. *Total weight approximately 74.29 carats. The largest stone weighing approximately 4.30 carats and measuring 9.75 x 6.01mm*

\$12,000 - 18,000



909



912



910



911

909

LARGE RED GARNET

This beautiful cushion-cut stone is notable for its rich red color and high clarity. Its size, in particular, sets this stone apart as a rare commodity in the colored stone market. *Weighing approximately 80.58 carats and measuring 27.87 x 25.57 x 12.92mm*

\$2,500 - 3,500

910

VERY LARGE DEMANTOID GARNET

Ural Mountains, Russia

Faceted as a circular-cut this rich, green demantoid garnet is distinguished by its large size and deep saturation of color. *Weighing approximately 9.27 carats and measuring 13.19 x 7.82mm*

\$35,000 - 45,000

Accompanied by a Moscow State University Gemmological Center report numbered 260450 and dated December 17, 2018 stating that the 9.27 carats demantoid garnet is natural and that it originates from the Ural deposits of Russia.

911

RED RHODOLITE GARNET

This beautiful, octagonal step-cut Pyrope-Almandine Rhodolite Garnet has exceptional red color, clarity and luster. *Weighing approximately 19.97 carats and measuring 13.63 x 13.40 x 11.85 mm*

\$3,500 - 4,500

Accompanied by a Gemological Institute of America report number 5171556354 dated April 25, 2016 stating that the 19.97 carats octagonal step cut transparent red stone is a Pyrope-Almandine Rhodolite Garnet.

912

RICH GREEN DEMANTOID GARNET

Ural Mountains, Russia

This fine oval-cut stone displays a fine, rich green color, excellent transparency and luster. *Weighing approximately 2.58 carats and measuring 8.59 x 6.64 x 5.68mm*

\$12,000 - 15,000



913
SPESSARTITE GARNET

Namibia

This gem-quality cushion-cut garnet is exemplary for the species. With exceptional clarity and luster, the hue is a deep, vivid orange. *Weighing approximately 29.76 carats and measuring 19.2 x 16.6 x 11.18mm*

\$8,000 - 10,000



914
DEMANTOID GARNET

Ural Mountains, Russia

A fine, ring-sized demantoid garnet having the most desirable color, with a high degree of dispersion and luster. *Weighing approximately 1.11 carats and measuring 5.6 x 5.3 x 5.06mm*

\$1,200 - 1,500



915
RED HESSONITE GARNET

Nigeria

A fine cushion-cut garnet of red hue having a suitable size for mounting as a ring. Both the luster and transparency are excellent for the species. *Weighing approximately 11.29 carats and measuring 14.77 x 12.44 x 8.12mm*

\$1,000 - 1,500

916
ANDRADITE GARNET VAR. DEMANTOID

Namibia

This attractive pear shaped garnet has a pleasing color which is characteristic for the region. Demantoid garnets of larger than 1 carats are considered rare. *Weighing approximately 4.07 carats and measuring 11.04 x 8.16 x 6.77 mm*

\$7,000 - 9,000

Accompanied by a Coloured Gemstone Report, Cape Town, South Africa numbered CS15121366 stating that the 4.07 carats stone has a good color grade.





917

917

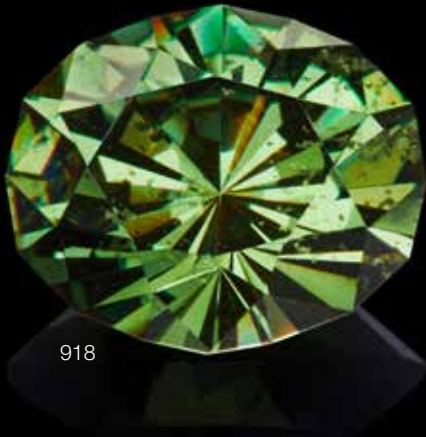
LARGE AND IMPRESSIVE RHODOLITE GARNET

Africa

This fabulous and very large purplish red Pyrope-Almandine Garnet is faceted as a triangular, modified brilliant-cut. Both the transparency and luster are exceptional for the species. A very fine stone for the knowledgeable collector. *Weighing approximately 42.83 carats and measuring 21.48 x 22.08 x 13.39 mm*

\$10,000 - 12,000

Accompanied by a Gemological Institute of America report numbered 2175192251 dated June 24, 2015 stating that the 42.83 carats stone is a Pyrope-Almandine Garnet Rhodolite.



918

918

ANDRADITE GARNET VAR. DEMANTOID

Namibia

This attractive oval faceted stone, has an attractive hue characteristic for the region. The stone has both excellent fire and dispersion which is beautifully displayed by its expert cutting. *Weighing approximately 5.51 carats and measuring 11.43 x 9.71 x 6.93 mm*

\$10,000 - 15,000

Accompanied by a Coloured Stone Gemstone Report, Cape Town, South Africa numbered CS17052329 that the 5.513 carats garnet has very good color and that it is of Namibian origin.



919

919

GEM YELLOW ORTHOCLASE

Itrongahy, Madagascar

The name orthoclase is from the Greek for "straight fracture," because its two cleavage planes are at right angles to each other. Orthoclase belongs to the feldspar family of minerals that make up more than half of the Earth's rocky crust. Very rarely these common minerals form crystals that are gem quality. Orthoclase can be found as a transparent colorless, champagne, or yellow gem resembling citrine quartz or yellow beryl. This 30+ carat gem is unusual because orthoclase rarely occurs in a colorful transparent form. Its large size, fine transparency, and vibrant yellow color all contribute to its rarity. This is an exceptional gemstone originating from Madagascar, the most important source for gem-quality orthoclase. *Weighing approximately 30.80 carats and measuring 19.86 x 16.03 x 14.04mm*

\$1,200 - 1,500

920

PERIDOT

Pakistan

An oval-cut peridot having excellent color saturation, clarity and luster. *Weighing approximately 23.13 carats and measuring 19.05 x 15.42 x 11.34mm*

\$1,500 - 2,000



921



922

921

STUNNING PERIDOT

A classic cushion-cut stone of astonishing beauty and large size for the species, having a bright, vivid green hue as well as exceptional clarity and luster. *Weighing approximately 45.35 carats and measuring 27.45 x 16.72 x 11.97mm*

\$8,000 - 10,000

922

LARGE, RARE PEZZOTAITE

Sakavalana pegmatite near Ambatovita Mandrosonoro Province de Fianarantsoa, Madagascar
Discovered in only November 2002, in a granitic pegmatite in the remote central highlands of the island nation in a region which has produced many other gem minerals. The small deposit of Pezzottaite was virtually exhausted and only a few kilograms of rough were recovered at the time. Named "raspbery!" by those in the industry, the mineral is, in fact, distinguished from beryl by its higher refractive index (1.615-1.619) and specific gravity (approximately 3.09-3.14), its spectrum, x-ray diffraction and its rhombohedral rather than hexagonal symmetry.

Defined by its strong magenta pink color the present stone is a large example of this particular species. Characterized by a vivid, hot pink hue, this octagonal-cut stone has exceptional color and luster for the species. It is a sought-after example for the for the knowledgeable collector. *Weighing approximately 12.20 carats and measuring 18.38 x 11.40 x 7.30mm*

\$45,000 - 55,000

Accompanied by a Gemological Institute of America report and Notable letter numbered 5181187218 and dated February 22, 2017 stating: This large pezzottaite exhibits a saturated vivid pink coloration, which is seen in this cesium rich mineral. Growth tubes and liquid fingerprints are present. Pezzottaite is a relatively new mineral that was discovered in 2002 by Dr. Frederico Pezzota, in Madagascar, which is the type locality for this mineral species. Gem quality pezzottaite is primarily recovered only from Madagascar. Roguh crystals that will cut large finished stones are very rare. Most finished stones are less than 5 carats and high quality stones over 10 carats are exceptionally rare. The combination of the rarity, large size and saturated color make this a notable pezzottaite.



923



924

923

FINE RHODOCHROSITE

Colorado

A fine rhodochrosite faceted as a mixed emerald-cut. The color is a desirable hue of strawberry red and the clarity is excellent for the species. *Weighing approximately 7.25 carats and measuring 13.11 x 9.03 x 6.36mm*

\$1,500 - 2,000

924

PAIR OF RUBIES

Jagdalek, Afghanistan

This well-matched pair of rubies comes from the fabled and historic mines of Afghanistan. The rich red color makes these a desirable pair. *Weighing 2.10 and 2.15 cts (2)*

\$6,000 - 8,000

Accompanied by a Gemological Institute of America report numbered 2205199835 dated April 25, 2019 stating that the 2.22 carats ruby shows no indications of heating.

Accompanied by a Gemological Institute of America report numbered 2205199839 dated April 11, 2019 stating that the 2.26 carats ruby shows no indications of heating.



(actual size)



925

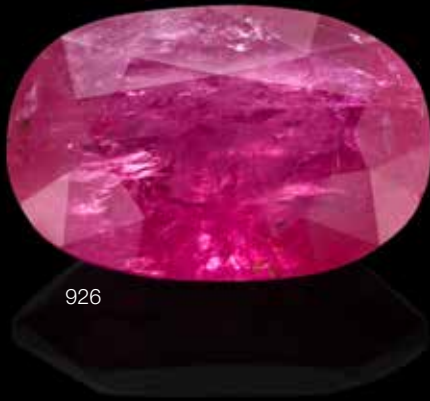
EXCEPTIONAL RUBY

Thailand

This fine unenhanced ruby is faceted as a modified brilliant cut cushion-shape. The red hue is rich and unmodified and displays exceptional luster and brilliance. The size would ideally lend itself to being mounted as a ring or pendant. Untreated rubies of this size of over 5 carats are rare in the marketplace. This is an exceptional stone for the collector. *Weighing approximately 8.97 carats and measuring 13.30 x 12.42 x 6.18mm*

\$120,000 - 150,000

Accompanied by a Gemological Institute of America report numbered 5202026968 dated February 7, 2019 stating that the 8.97 carats ruby originates from Thailand and that there are no indications of heating.



926



929

926

RUBY

Tajikistan

An unenhanced, natural ruby oval brilliant cut having a bright red hue and good luster. *Weighing approximately 7.05 carats and measuring 13.90 x 9.18 x 6.71mm*

\$3,000 - 5,000

Accompanied by a GRS Gemresarch Swisslab Gemstone Report numbered GRS 2017-026510 dated February 16, 2017 stating that the 7.05 carat brilliant-cut oval-cut ruby originates from Tajikistan and that it shows no indications of thermal treatment.



927

927

VIOLET TO PURPLE COLOR-SHIFT SAPPHIRE

Tanzania

A fine oval-cut unenhanced sapphire which changes from violet to purple. *Weighing approximately 4.08 carats and measuring 9.80 x 8.61 x 6.35mm*

\$12,000 - 15,000

Accompanied by a Gemological Institute of America report numbered 5171563722 dated April 28, 2016 stating that the 4.08 carats sapphire is a natural sapphire changing color from violet to purple and that it originates from Tanzania and shows no indications of heat treatment.



928

928

WHITE SAPPHIRE AND DIAMOND RING

Centering on a beautiful, cushion-shaped white sapphire, *weighing approximately 8.50 carats*, surrounded by sixteen small brilliant-cut diamonds, *weighing approximately 1.02 carats*, mounted in 14K white gold, *size 5 1/2*.

\$2,500 - 3,500

929

PINK SAPPHIRE

East Africa

This attractive pink sapphire is faceted as a cushion/square modified mixed-cut. The hue is a rich purplish pink shade and both the luster and clarity are excellent. *Weighing approximately 3.05 carats and measuring 7.68 x 7.35 x 5.43mm*

\$1,500 - 2,000

Accompanied by an American Gemological Laboratories report numbered 1089950 dated January 24, 2018 stating that the 3.05 carats pink sapphire has a color which is the result of low temperature heating and that the color stability is excellent.



930

FINE YELLOW SAPPHIRE

Sri Lanka

This lovely unenhanced daffodil-yellow colored oval modified mixed cut gem is bright and lustrous. A classic for the region it is a unusual to find sapphires of this size and quality in the gem gravels of Sri Lanka. *Weighing approximately 29.94 carats and measuring 19.41 x 16.48 x 10.61mm*

\$18,000 - 22,000

Accompanied by an American Gemological Laboratories report numbered CS 62481 dated July 29, 2014 stating that the 29.94 carats yellow sapphire originates from Sri Lanka and that it shows no evidence of heat enhancement.

931

PURPLISH-PINK SAPPHIRE

Sri Lanka

A fine cushion-shaped stone which displays exceptionally vivid and bright color as well as excellent luster. *Weighing approximately 9.14 carats and measuring 12.72 x 9.32 x 8.33mm*

\$35,000 - 45,000

Accompanied by a Gem Research Swisslab (GRS) certificate number GRS2018-016786 stating that the 9.14 carats vivid purplish-pink sapphire is of Sri Lankan origin and that it shows no indications of thermal treatment. The stone is shown mounted in a diamond setting which is not included in this offering.



932

YELLOW SAPPHIRE

An attractive, vivid yellow unenhanced natural sapphire faceted as an oval brilliant cut, which is transparent and lustrous with excellent clarity. *Weighing approximately 9.16 carats and measuring 13.10 x 10.09 x 8.32 mm*

\$3,000 - 4,000

Accompanied by a Gemological Institute of America report numbered 6194887401 dated December 11, 2018 stating that the 9.15 carats sapphire is natural and that it shows no indications of heating.





933

933

LARGE BLUE SAPPHIRE

A classic, circular-cut blue sapphire with rich blue hue having good luster. Sapphires of over 10 carats are considered to be rare. *Weighing approximately 16.17 carats and measuring 14.64 x 9.51 x 9.53 mm*

\$35,000 - 45,000

Accompanied by a Gemological Institute of America report number 6282195749 dated February 23, 2018 stating that the 16.17 carats near-round modified brilliant cut blue sapphire shows no indications of heating.



934

934

PURPLISH-PINK SAPPHIRE

A lovely, bright oval faceted pink sapphire which has a vivid purplish-pink excellent luster and brilliance. *Weighing approximately 5.80 carats and measuring 12.30 x 9.82 x 5.45mm*

\$5,000 - 7,000

Accompanied by a Gemological Institute of American report numbered 5171887039 and dated October 11, 2016 stating that the pink sapphire (which was mounted in a diamond setting at the time of testing--this mount is not part of this offering), has had heat treatment.



935

935

PEACOCK BLUE SAPPHIRE

Sri Lanka

A rich blue sapphire distinguished by its electric blue color known as "peacock". The oval cut ensures that this stone will be considered a classic. *Weighing approximately 5.03 carats and measuring 11.73 x 9.15 x 5.86 mm*

\$12,000 - 15,000

Accompanied by a Lotus Silver gemological report report no. 2409-0021 dated June 12, 2018 stating that the 5.03 carats heated stone is a vivid Peacock blue sapphire color and that it originates from Sri Lanka.



(actual size)



936

CLASSIC BLUE SAPPHIRE

Sri Lanka

This fine unenhanced, natural sapphire has been faceted into a classic emerald-cut. The large size, rich blue color and high degree of brilliance all combine to make this a desirable stone for the collector.

Weighing approximately 17.92 carats and measuring 15.64 x 13.11 x 8.64mm

\$120,000 - 150,000

Accompanied by a Gemological Institute of America report numbered 5202026970 dated February 19, 2019 stating that the 17.92 carats sapphire originates from Sri Lanka and that it shows no indications of heat treatment.



937

937
SAPPHIRE
Sri Lanka

A fine, classic ring-sized stone which has been faceted as an oval brilliant cut. The color is classic slightly violetish cornflower blue which is unenhanced and natural. Transparent sapphires of over 10 carats are considered rare and this one is a classic and lustrous one. *Weighing approximately 15.81 carats and measuring 15.08 x 13.30 x 8.84mm*

\$25,000 - 35,000

Accompanied by a Gemological Institute of America report numbered 1192296390 and dated May 10, 2018 stating that the 15.81 carats sapphire originates from Sri Lanka and that it shows no indications of heat treatment.



938

938
BLUE SAPPHIRE
Burma

This unenhanced blue sapphire faceted as a modified brilliant-cut oval with excellent transparency and luster. Sapphires of nearly 10 carats are rare in the marketplace. *Weighing approximately 9.82 carats and measuring 13.08 x 10.65 x 7.41 mm*

\$50,000 - 60,000

Accompanied by a Gubelin report numbered 16071167 and dated July 27, 2016 stating that the blue sapphire originates from Burma and that it shows no indications of heating.



939

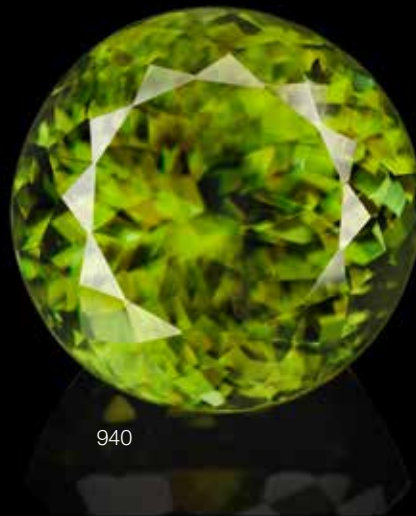
LARGE SPHALERITE

Spain

A large size for the species, this well-faceted triangular cut stone has many exemplary qualities: the transparency is very high and both the dispersion and luster are excellent. *Weighing approximately 29.32 carats and measuring 19.5 x 19.5 x 11.8mm*

\$800 - 1,200

To be sold without reserve



940

EXCEPTIONAL SPHENE

Madagascar

Sphene is the older name for the mineral titanite and is derived from the Greek meaning “wedge” referring to its classic wedge-shaped crystal habit—it is still used by gemologists to describe gem-quality titanite. The name titanite is more typically used amongst mineralogists today and refers to its content of titanium. Madagascar remains the main source for facet-grade sphene—yet few examples reaching the market are of the quality of the present stone.

The present stone, faceted as a Portuguese-cut, is an exceptional example of its type with its vivid chartreuse green body color and vibrant red flashes of color. A world-class sphene by any measure and a rare stone for the collector and displays that sought-after dispersion for which this gem is beloved. Rarely seen in a size this large, at over 29 carats, this is a very special offering. *Weighing approximately 29.17 carats and measuring 16.5 x 13.0mm*

\$12,000 - 15,000



941



944



942



943

941

VERY FINE PINKISH RED SPINEL

Burma

A well-cut oval stone with excellent clarity and luster and an attractive pinkish red color. *Weighing approximately 3.83 carats and measuring 11.45 x 7.63 x 5.10 mm*

\$5,000 - 7,000

Accompanied by an American Gemological Laboratories report number 1098643 dated February 7, 2019 stating that the 3.83 carats spinel originates from Burma and that it may exhibit heat treatment.

942

BLUE SPINEL

This attractive cushion-cut spinel is a classic, with its slightly violetish blue color and excellent luster. *Weighing approximately 3.37 carats and measuring 9.15 x 7.95 x 6.02mm*

\$4,500 - 5,500

943

RED SPINEL

A cushion, modified brilliant-cut of great transparency, with orangy-red color and having excellent luster. *Weighing approximately 8.39 carats and measuring 13.17 x 10.14 x 7.23 mm*

\$8,000 - 10,000

Accompanied by a Gemological Institute of America report numbered 1166456381 stating that the 8.39 carats orangy red spinel shows no indications of heating.

944

BLUE-VIOLET SPINEL

A rich blue-violet natural spinel faceted as a cushion-cut having excellent luster and transparency. *Weighing approximately 8.69 carats and measuring 13.49 x 10.24 x 7.65mm*

\$8,000 - 10,000

Accompanied by a Gemological Institute of America report numbered 2173126814 dated May 5, 2015 stating that the 8.69 carats blue-violet spinel is natural and that it shows no indications of heating.



945

CLASSIC, EXCEPTIONAL LARGE SPINEL

Pamir Mountains, Tajikistan

Obtained from an old East Coast estate and originally purchased in Europe half a century ago, the present offering is a rare and exceptional reddish pink rectangular emerald-cut spinel which has superb transparency and luster. It is an exceptionally large stone for the species and one which displays the highest degree of qualities most desired by serious collectors. This is a notable offering of quality and distinction. *Weighing approximately 31.34 carats and measuring 20.64 x 15.85 x 10.16mm*

\$180,000 - 220,000

Accompanied by an American Gemological Laboratories report number 8087098 dated February 8, 2018 stating that the reddish pink spinel is Classic (TM) Tajikistan (Pamir Mountains) and that there is no gemological evidence of enhancements or treatments present.



946

946

LARGE, RICH BLUE SPINEL

This spectacular, modified brilliant-cut cushion-shaped stone is characterized by a rich dark blue hue and excellent transparency and luster. The stone is exceptional for its richness of color and also, in particular, its size. *Weighing approximately 30.21 carats and measuring 19.40 x 19.17 x 10.39mm*

\$40,000 - 60,000

Accompanied by a Gemological Institute of America report #1116150301 dated September 17, 2009 stating that the 30.21 carats dark blue spinel is natural color.



947

947

FINE RED SPINEL

Tanzania

A very large size for spinel, this beautiful stone has excellent color, clarity and luster making it a fine choice for the collector. *Weighing approximately 9.67 carats and measuring 13.28 x 10.45 x 9.12mm*

\$6,000 - 8,000



948

948

VIOLET SPINEL

A fine cushion-shaped spinel having a distinct violet hue. The stone equally display excellent clarity and luster. *Weighing approximately 8.07 carats and measuring 13.06 x 11.40 x 6.75mm*

\$12,000 - 15,000



949

SUITE OF FIFTEEN PINK SPINELS

Tajikistan

Centering on a pear-shaped spinel, weighing approximately 3.55 carats, measuring 12.58 x 7.04 x 5.12mm; together with fourteen oval-cut pink spinels, beautifully matched for color and clarity. Total approximate weight of all stones: 15.0 carats. (15)

\$8,000 - 10,000

950

VIVID PINK SPINEL

Tajikistan

This attractive rose pink stone, displays all the color saturation which one would like to see in a gemstone as well as fine luster. Weighing approximately 8.65 carats and measuring 14.77 x 9.97 x 6.71mm

\$6,000 - 8,000

951

PINK SPINEL EARRING SUITE

Tajikistan

Suitable for mounting as earpendants, comprising 20 spinels of bright pink spinel, with a total combined weight of approximately 4.76 carats. (20)

\$1,200 - 1,500

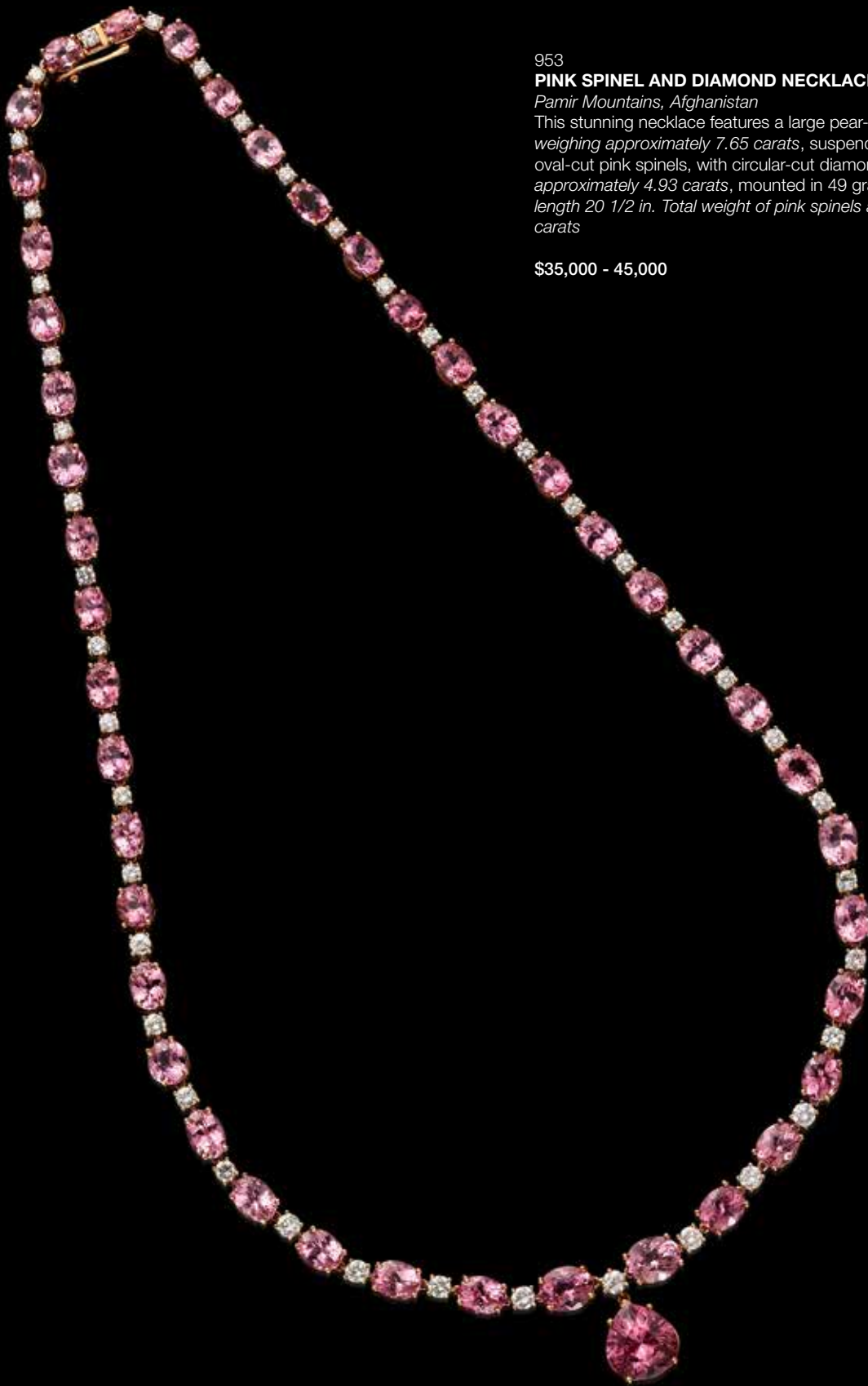
952

PINK SPINEL

Pamir Mountains, Afghanistan

Faceted as an oval cut, with excellent luster and clarity, this attractive stone would create an excellent ring. Weighing approximately 3.22 carats and measuring 9.81 x 7.96 x 5.41mm

\$1,200 - 1,500



953

PINK SPINEL AND DIAMOND NECKLACE

Pamir Mountains, Afghanistan

This stunning necklace features a large pear-shaped pink spinel, weighing approximately 7.65 carats, suspended from a line of 43 oval-cut pink spinels, with circular-cut diamond spacers, weighing approximately 4.93 carats, mounted in 49 grams of 18K rose gold, length 20 1/2 in. Total weight of pink spinels approximately 55.79 carats

\$35,000 - 45,000



956



955



954



957



958

954

SPODUMENE VAR. KUNZITE

Brazil

A rich pink hue, this lustrous oval-cut Kunzite is of suitable size for mounting as a ring. *Weighing approximately 80.70 carats and measuring 28.9 x 22.8 x 18.18mm*

\$4,000 - 6,500

955

SPODUMENE VAR. KUNZITE

Brazil

Distinguished by a hot pink hue, this fine kunzite is also notable for its excellent clarity and luster. The size and pear-shape would ideally lend it to being mounted as a pendant. *Weighing approximately 68.70 carats and measuring 31.44 x 18.23 x 16.49mm*

\$7,000 - 9,000

956

VERY FINE KUNZITE

Brazil

This is a beautiful gem kunzite with an exceptionally vivid pink hue. It has been faceted as a modified cushion-cut brilliant with checkerboard faceted pavilion to provide an added measure of scintillation. *Weighing approximately 76.41 carats and measuring 22.79 x 24.44 x 17.81mm*

\$5,000 - 7,000

957

SPODUMENE VAR. KUNZITE

Brazil

This fine emerald-cut, suitable for mounting as a pendant, has exceptional clarity for such a large stone. Its luster is surpassed only by its transparency. *Weighing approximately 130 carats and measuring 40.83 x 22.75 x 17.82 mm*

\$6,000 - 8,000

958

RARE CALIFORNIA KUNZITE

Oceanview Mine, Pala District, San Diego County, California

A gorgeous, oval-cut kunzite which displays a very strong hot pink color, as well as excellent transparency and luster. *Weighing approximately 22.5 carats and measuring 20.5 x 14.0 x 10.0mm*

\$1,500 - 2,000



959



961



960

959
TANZANITE

Arusha, Tanzania
A fine, rich violet oval-cut tanzanite having both exceptional luster and clarity. *Weighing approximately 11.29 carats and measuring 15.52 x 11.19 x 9.04mm*

\$1,500 - 2,500

960
FINE TANZANITE

Arusha, Tanzania
A fine cushion-shaped tanzanite having excellent luster and clarity and a rich saturation of color. *Weighing approximately 16.0 carats and measuring 17.10 x 13.9 x 8.8mm*

\$3,000 - 5,000

961
VIOLET TANZANITE

Arusha, Tanzania
Faceted as a radiant-cut, the minimal faceting allows the high degree of transparency to best be appreciated. *Weighing approximately 9.39 carats and measuring 14.05 x 10.78 x 7.25mm*

\$1,500 - 2,000

962
LARGE TOPAZ

Ukraine
Designed as a faceted free-form, with optically clear transparency and a light brown color. *Weighing approximately 90.83 carats and measuring 40.3 x 22.39 x 13.65mm*

\$900 - 1,200
To be sold without reserve

963
VIVID BLUE TOPAZ--"A MEMBER OF THE 100 CARATS CLUB"

Brazil
This emerald cut gem has a hue which is described in the trade as "London Blue", a rich saturation of color. The decision to facet the original rough as an emerald-cut always shows the confidence of the cutter in the material: the topaz is gem-quality with an exceptional degree of luster and transparency. *Weighing approximately 204.52 carats and measuring 45.26 x 25.82 x 18.86mm*

\$2,500 - 3,000

964
BLUE TOPAZ PENDANT

Brazil
Distinguished by a rich blue color which would be classified in the trade as "London Blue", *weighing approximately 80 carats by estimation, simply bezel-set in 14K yellow gold with a pendant bail. Height 1 1/4 in*

\$1,500 - 2,000

965
EXCEPTIONAL IMPERIAL TOPAZ

Brazil
This is a gem Imperial topaz of unenhanced brownish pinkish orange color, faceted as a cushion shape. Both the clarity and luster are excellent. This is a fine gemstones for the knowledgeable collector. *Weighing approximately 14.22 carats and measuring 16.14 x 10.87 x 8.49 mm*

\$7,000 - 10,000

Accompanied by an American Gemological Laboratories report number 1089969 dated January 22, 2018 stating that the natural topaz of 14.22 carats shows no gemological evidence of enhancements or treatments.

966
BLUE TOPAZ--"A MEMBER OF THE 100 CARATS CLUB"

Brazil
This fine, large pear-shaped stone has an attractive sea blue color as well as excellent clarity and luster. *Weighing approximately 402.33 carats and measuring 49.58 x 38.87 x 32.46mm*

\$1,500 - 2,500

Accompanied by a GIA indentification report numbered 5181877188 dated November 28, 2017 stating that the 402.33 carats topaz has treated color".

967
LARGE BLUE TOPAZ

Ukraine
An emerald-cut with scissors-cut faceting, having superb transparency and luster. *Weighing approximately 78.5 carats and measuring 29.8 x 18.32 x 15.44mm*

\$700 - 1,000

968
IMPERIAL TOPAZ

Brazil
A fine cushion-shaped topaz having a checkerboard faceted pavilion which provides an added measure of scintillation. *Weighing approximately 8.97 carats and measuring 13.68 x 11.48 x 7.26mm mm*

\$800 - 1,200
To be sold without reserve

969
LARGE IMPERIAL TOPAZ--"A MEMBER OF THE 100 CARATS CLUB"

Ukraine
A very large marquise-shaped stone which is optically clear and lustrous. *Weighing approximately 298.01 carats and measuring 48.77 x 34.92 x 26.21mm*

\$2,500 - 3,500
To be sold without reserve

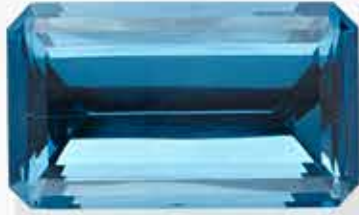
Accompanied by a Gemological Institute of America report number 6173660210 dated June 29, 2016 stating that the modified marquise brilliant stone of 298.01 carats is a topaz and that the color origin cannot currently be determined.



968



965



963



967



969



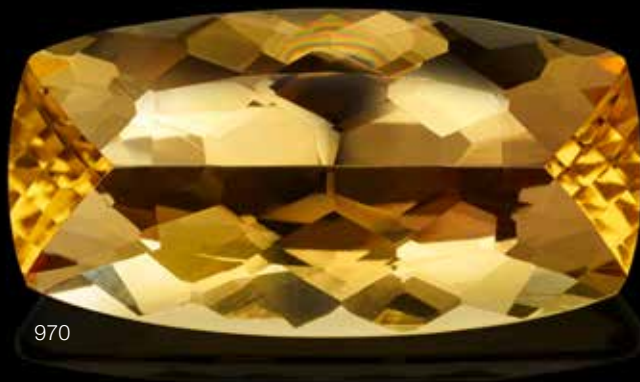
962



964



966



970
IMPERIAL TOPAZ
Brazil

This astonishingly beautiful yellow-orange has been cut as a modified cushion-cut with a beautiful faceting style of the pavilion which provides this nearly optically clear stone with added scintillation. Weighing approximately 42.3 carats and measuring 31.86 x 16.47 x 10.05mm

\$15,000 - 20,000

Accompanied by a Gemological Institute of America report numbered 6197276477 and dated April 20, 2018 stating that the 42.30 carats modified brilliant cut transparent yellow-orange topaz show no gemological evidence of treatment.

971
No lot



972
VERY FINE IMPERIAL PINK TOPAZ
Brazil

A modified oval brilliant-cut pink topaz with a rich saturation of color, having excellent luster and clarity. Weighing approximately 8.40 carats and measuring 15.11 x 8.39 x 7.13mm

\$8,000 - 10,000

Accompanied by an American Gemological Laboratories report number 10986544 dated February 7, 2019 stating that the 8.40 carat pink topaz is natural and that the color variety of topaz is commonly the result of a relatively low temperature heating process which is stable.



973

EXCEPTIONAL BLUE TOURMALINE

Namibia

This rich bluish-green cushion cut tourmaline has a rich hue, excellent clarity and luster. Such a large size stone having a teal color is unusual in the marketplace. *Weighing approximately 27.93 carats and measuring 19.19 x 16.43 x 12.08 mm*

\$20,000 - 25,000

974

CHROME TOURMALINE

Africa

Faceted with both a checkerboard-cut crown and pavilion, this cushion shaped tourmaline has a well-saturated green color and both excellent clarity and luster. *Weighing approximately 16.29 carats and measuring 16.78 x 14.20 x 9.27mm*

\$1,500 - 2,500

Accompanied by an American Gemological Laboratories report numbered 1089964 and dated January 26, 2018 stating that the 16.29 carats tourmaline is of the chrome variety and that the color of this stone is due to a combination of chromium and vanadium and that there is no gemological evidence of enhancements/treatments present.

975

PINK TOURMALINE

Brazil

This attractive cushion-shaped pink tourmaline is beautifully cut and also possesses a desirable pink hue. Both the luster and clarity are exceptional for tourmaline. *Weighing approximately 34.04 carats and measuring 20.45 x 15.40 x 13.60 mm*

\$2,000 - 3,000



974



975



976

976

RICH BLUE PARAIBA TOURMALINE FROM BRAZIL

Batalha Mine, Paraiba, Brazil

This fine oval-cut tourmaline possesses a rich blue hue which is unheard of in an unenhanced stone. Neither aqua nor green, the stone is a straightforward blue without modifying colors. It is rare to find tourmalines from the type-locality which are larger than 1 carats size. *Weighing approximately 2.05 carats and measuring 8.86 x 7.19 x 4.58mm*

\$12,000 - 15,000

Accompanied by an American Gemological Laboratories report numbered CS 82558 dated February 18, 2013 stating that the 2.05 carats tourmaline originates from Brazil and that it shows no gemological evidence of heat treatment.



977

977

RUBELLITE TOURMALINE

This well-faceted cushion-shaped stone has a rich red hue which is known as "rubellite" in the gem trade. It is a classic stone both in shape and color and is desirable for its large size and excellent clarity for the species. *Weighing approximately 24.20 carats and measuring 18.03 x 16.47 x 11.48mm*

\$12,000 - 15,000



978

978

VIVID GREEN TOURMALINE

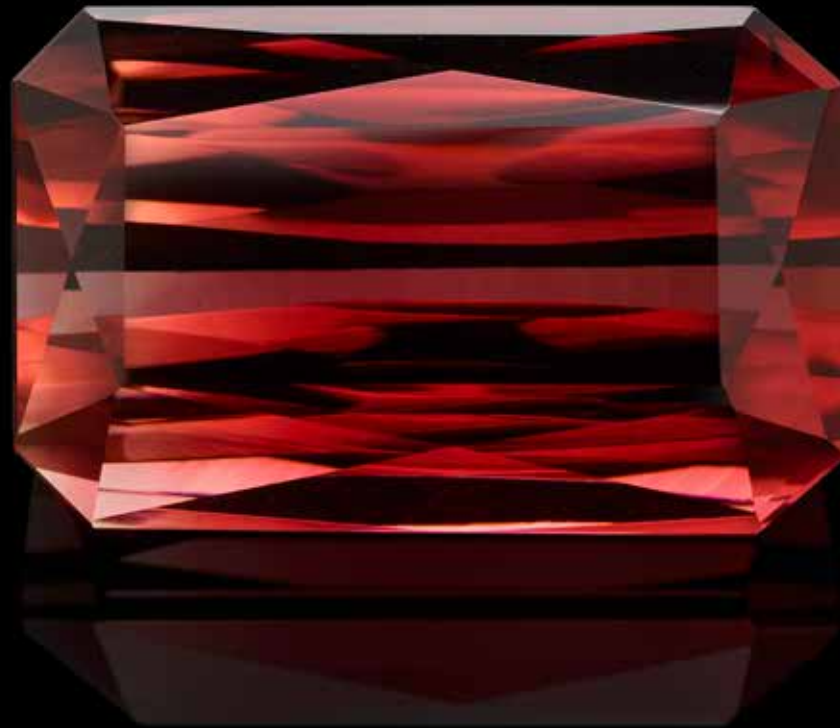
Africa

An oval-cut tourmaline which would commonly be termed "Paraiba-type" tourmaline in the gemstone trade: the vivid green hue is vibrant and unmodified by yellow or brown. The stone is also distinguished by its excellent luster and transparency. *Weighing approximately 13.12 carats and measuring 16.39 x 13.06 x 9.67 mm*

\$5,000 - 7,000



(actual size)



979

PINK TOURMALINE

The large and luscious emerald-cut tourmaline has a desirable pink hue, but most of all, what makes it desirable for collectors is its high degree of clarity and luster. *Weighing approximately 78.41 carats and measuring 28.68 x 18.19 x 15.55mm*

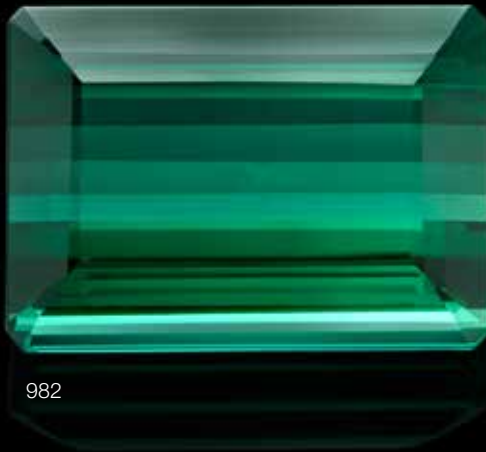
\$30,000 - 40,000



980



981



982

980

PAIR OF WATERMELON TOURMALINE EARPENDANTS

Afghanistan

Each earpendant comprising 11 cross-section slices of a watermelon tourmaline crystal having pink or blue cores and delicate green borders, suspended from 14K yellow gold earwires and having a delicate gold chain decoration with ball accents. *Height 2 1/2in*

\$900 - 1,200

981

ORANGE-PINK TOURMALINE

Democratic Republic of Congo

A large oval-cut tourmaline which displays an unusual color: an even split between deep orange and pink. The oval cut reveals a deep saturation of color and reveals the high degree of clarity in this attractive stone. *Weighing approximately 29.38 carats and measuring 20.09 x 17.31 x 13.36mm*

\$6,000 - 8,000

982

RICH GREEN TOURMALINE

With a true, rich saturation of green unmodified by other colors, the high clarity of this fine stone is apparent. *Weighing approximately 32.60 carats and measuring 21.16 x 15.21 x 10.24mm*

\$10,000 - 15,000

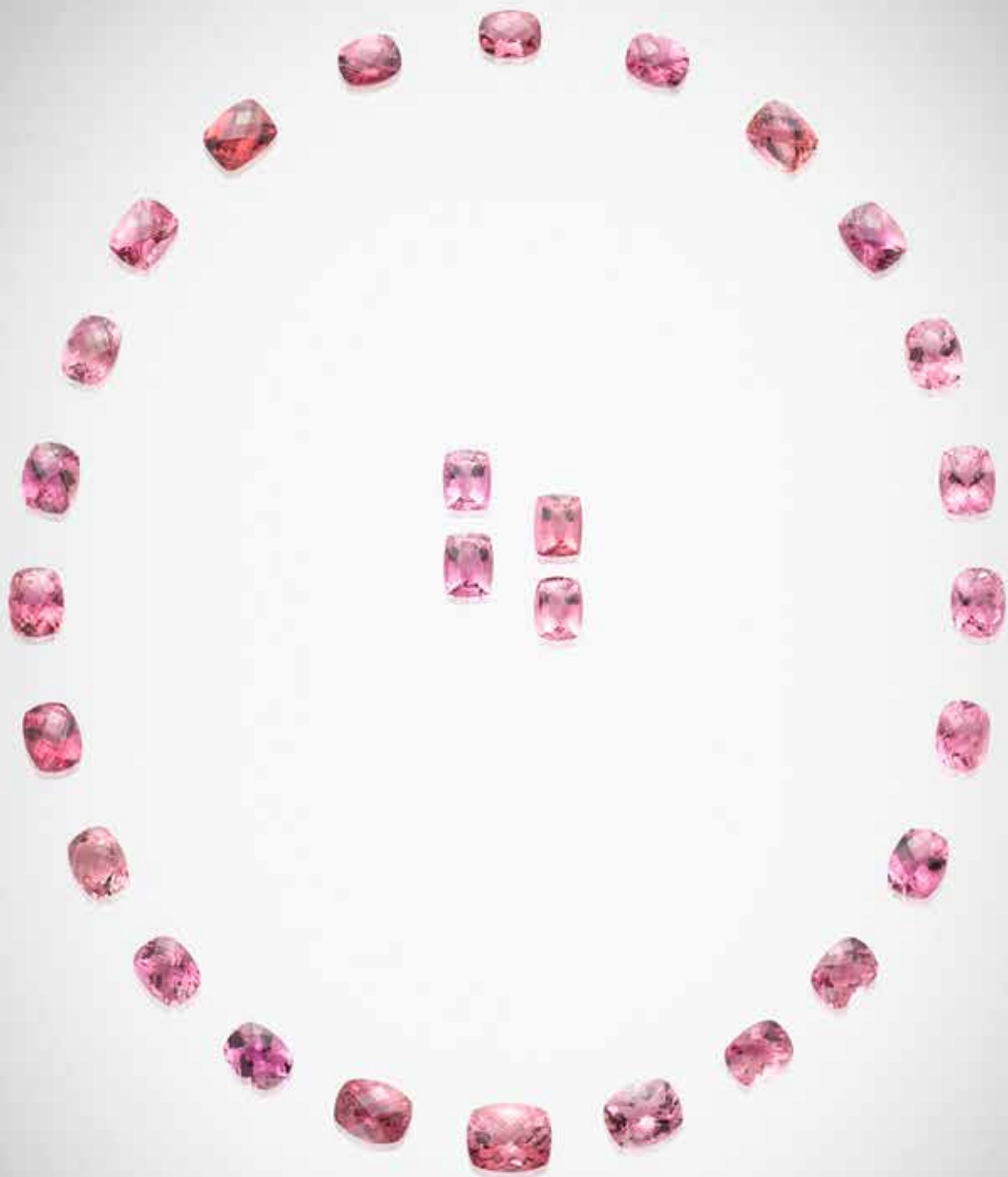


983

**EXTRAORDINARY HOT PINK TOURMALINE RIVIERE
NECKLACE**

Comprising forty-five circular-cut tourmalines from Nigeria exhibiting the most vivid, unenhanced hot pink hue imaginable, the largest weighing approximately 6.59 carats graduating to the smallest which weights 0.68 carats. All cut from the same parcel of rough discovered in one find, this is an unsurpassed collection which would be difficult to replicate for color, clarity and overall quality. This is a stunning rivière necklace. *Length 16 in*

\$30,000 - 40,000



984

SUITE OF PINK TOURMALINES

Suitable for mounting as a necklace and pair of earrings, comprising 28 cushion-shaped stones, each with checkerboard faceting, graduating in size from 12 x 10 mm at the center to 9 x 7 mm, the largest weighing approximately 5.75 carats. *Total weight 82.50 carats. (28)*

\$6,000 - 8,000



985
TEAL BLUE TOURMALINE
Brazil

A very fine emerald-cut tourmaline having a strong bluish tinge to the green body color. The stone displays excellent clarity and luster and the emerald cut shows the confidence of the cutter in selecting a faceting style with as few facets as possible to show off the high clarity of the mineral. *Weighing approximately 28.63 carats and measuring 21.43 x 16.36 x 8.04mm*

\$10,000 - 15,000



986
MINT TOURMALINE
Democratic Republic of Congo

This attractive oval-cut stone with Portuguese faceting has great scintillation and a beautiful body color of mint green. The quality of the cut greatly displays the high degree of clarity. *Weighing approximately 31.03 carats and measuring 19.03 x 18.02 x 14,14mm*

\$12,000 - 15,000



987



988

987

EXCEPTIONAL GREEN TOURMALINE

Democratic Republic of Congo

This extremely fine and vibrant green tourmaline has a faceted as a cushion-shape with minimal faceting to best reveal the very high degree of clarity. The color is a rich shade of green with elements of blue visible. *Weighing approximately 80.45 carats and measuring 26.37 x 22.49 x 17.62mm*

\$40,000 - 60,000

988

RUBELLITE

Nigeria

A large stone, faceted as a oval, mixed cut having an even larger face up "spread", this beautiful stone has a rich red hue for which this type of tourmaline has been dubbed "rubellite". *Weighing approximately 34.35 carats and measuring 22.51 x 20.48 x 12.47mm*

\$12,000 - 15,000

989

FINE MULTI-COLOR TOURMALINE

Brazil

A fine emerald-cut tourmaline graduating in color from rich bluish-green at one end to near-colorless in the center and hot pink at the other end. *Weighing approximately 33.71 carats and measuring*

\$3,000 - 5,000

990

PINK TOURMALINE

A classic circular-cut stone with bright pink hue and excellent clarity and luster. *Weighing approximately 14.40 carats and measuring 15.76 x 10.67mm*

\$1,000 - 1,500

To be sold without reserve

991

TWO INDICOLITE TOURMALINES

Both cushion shapes, the first, *weighing approximately 11.86 carats and measuring 18.94 x 11.64 x 6.50mm*; the second, *weighing approximately 11.51 carats and measuring 19.47 x 11.29 x 6.44mm. (2)*

\$800 - 1,200

To be sold without reserve

992

GREEN TOURMALINE

Brazil

An elongated rectangular-cut green tourmaline with a rich bottle green color and high transparency. *Weighing approximately 18.24 carats and measuring 38.48 x 8.66 x 5.32mm*

\$500 - 700

To be sold without reserve

993

GREEN TOURMALINE

An elongated rectangular-cut tourmaline of rich green color with exceedingly high clarity and luster. *Weighing approximately 13.64 carats and measuring 25.84 x 9.36 x 5.39mm*

\$600 - 800

To be sold without reserve

994

RUBELLITE TOURMALINE

Africa

This deep red rubellite has been faceted as a generous cushion-shape oval-cut and would mount nicely as either a pendant or ring. *Weighing approximately 28.0 carats and measuring 20.68 x 19.36 x 11.15 mm*

\$1,500 - 2,000



989



990



991



993



992



994

995

SUITE OF EIGHT TURQUOISE CABOCHONS

Arizona

Fashioned as flat, plaque-like cabochons of rectangular outline, each having a bright blue color and a fascinating pattern of spider's web veining. *Total carats weight 278.0 carats. The largest cabochon weighing approximately 40.34 carats and measuring 35.55 x 28.31 x 4.18mm (8)*

\$1,000 - 1,500

996

TURQUOISE BEAD NECKLACE

Sleeping Beauty Mine, Arizona

Comprising 16mm uniform beads of bright blue turquoise with excellent polish. *Length 16 in*

\$2,000 - 3,000



995



996



997

997

VERY FINE RED ZIRCON

This modified brilliant-cut, highly transparent red zircon is exemplary for its cut, color and beautiful luster. *Weighing approximately 26.52 carats and measuring 16.82-17.16 x 10.66mm*

\$8,000 - 10,000

Accompanied by a Gemological Institute of America report number 6173563781 dated April 26, 2016 stating that the 26.52 carats stone is a zircon.



998



998

COLOR-CHANGE ZIRCON

Burma

A fine cushion-cut zircon is natural and that it changes from purplish gray to green depending on whether it is viewed under daylight or fluorescent vs. incandescent light. *Weighing approximately 11.33 carats and measuring 12.0 x 10.2 x 8.74mm*

\$12,000 - 15,000

Accompanied by a Gemological Institute of America report # 6203061230 stating that the 11.33 carats zircon is natural and that it changes from purplish gray to Green depending on whether it is viewed under daylight or fluorescent vs. incandescent light.

Accompanied by an Asia Glory Gemmological Laboratory of Myanmar report numbered # 015439 and dated July 23, 2014 stating that the 11.51 carats zircon (weight before recutting) greyish purple to green zircon is natural and that it originates from Mogok, Myanmar.



999

999

BLUE ZIRCON

Cambodia

A fine cushion-cut stone which is exemplary for its type, with a rich, well-saturated hue and excellent luster and clarity. *Weighing approximately 21.79 carats and measuring 14.38 x 12.77 x 11.17mm*

\$1,200 - 1,500



1000



1001

MINERAL DÉCOR

1000

CARNELIAN AGATE TEAPOT WITH LID

Carved in China from Brazilian agate, the rich red body color of the carnelian showing good translucency given the thickness of the sides. Decorated with a lotus-petal motif on all sides and with a small frog as the finial. Length 6 1/2 in

\$600 - 800

1001

AGATE HANDLED FLATWARE SERVICE WITH STAINLESS BLADES

Brazil

Suitable for use as a luncheon service, each with black and white banded agate handles which have been beautifully polished to reveal their intricate concentric patterns. Consisting of six place settings. (24)

\$500 - 700

1002^w

PETRIFIED WOOD INTARSIA TABLETOP

Madagascar

Unusual for its circular form and having a unique design, with cross-section slices of petrified wood selected for their complementary red, ochre and brown hues placed in an attractive concentric design. Measuring 28 x 1 in

\$1,000 - 1,500

1003

No lot



1002



1004

1004^w

PAIR OF EMERALD-IN-MATRIX LAMPS BY PETER MULLER

Brazil

Each base consisting of very large crystals of emerald, measuring up to 3 inches, in a black schist matrix. Each raised on a square rock crystal base. *Height overall: 18 1/2 in*

\$3,000 - 5,000



1005

1005

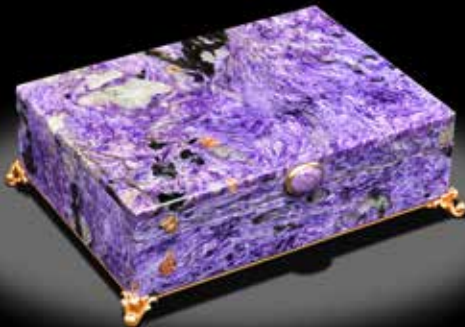
BLUE CALCITE BOWL

Argentina

Of free-form outline, contour polished to a bright finish, this fine bowl exhibits a rich aquamarine color with brown and yellow veining.

Measures 13 1/2 x 10 x 5 in

\$1,000 - 1,500



1006

1006

CHAROITE INTARSIA BOX

Russia

Charoite is an unusual stone of a very rare occurrence found in only one location northeast of Lake Baikal, Eastern Siberia, Russia. The lid of the present box is formed of a single large slab of charoite, well-matched at the seams for patterning, with a charoite cabochon thumbpiece and raised on four acanthus decorated feet and completed with a gilt-bronze plate to the underside. *Measuring 6 1/2 x 4 3/4 x 2 in*

\$2,000 - 3,000



1007

1007 ^w

MONUMENTAL FLUORITE VASE

China

Carved from a single large specimen of green, white and purple banded fluorite, this highly decorative vase is very impressive in its scale. *Measuring 12 x 12 in*

\$4,000 - 6,000

1008 ^w

MULTI-COLOR JASPER VASE

Carved from a single large specimen of red and green jasper, originating from Taiwan. This mineral has undergone the standard practice of heat treatment to bring out richer colors. *Height 16 in*

\$1,000 - 1,500



1008



1009



1010

1009

MUGHAL STYLE INDIAN RED JASPER BOWL

A fine quality bowl, carved from a single specimen of homogeneous red jasper, of lobed form, decorated with floral and scrolling motifs typical of the Mughal style, with a pair of horses heads forming the handles. *Measuring 11 x 8 x 3 in*

\$2,500 - 3,500

1010

JASPER INTARSIA BOX

Made in Florence, Retailed by Asprey and Co. Formed of large polished sections of variegated jasper in hues of green, ochre, and mauve, beautifully matched at the seams to show a continuation of pattern. The piano-hinged lid opening to reveal an interior lined with black onyx, with metal plaque, *signed Asprey. Measuring 12 x 8 1/2 x 3in (30.4 x 21.5 x 7.6cm)*

\$1,000 - 1,500

To be sold without reserve



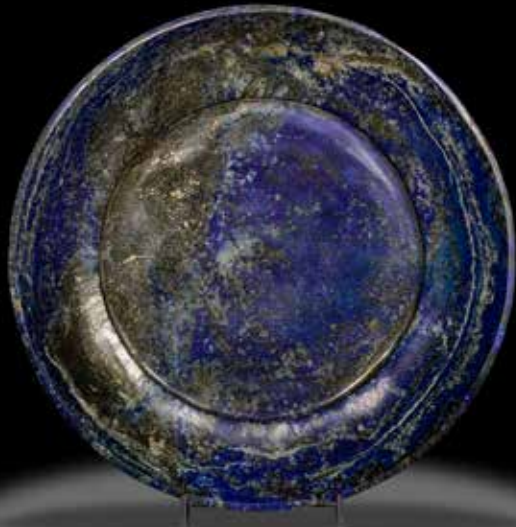
1011 ^w

JASPER VASE ON WOODEN STAND

Carved from a single large specimen of red and green jasper, originating from Taiwan. This mineral has undergone the standard practice of heat treatment to bring out richer colors.

Measuring in. Height with stand: 16 in

\$1,000 - 1,500



1012



1013



1014

1012

LAPIS LAZULI PLATE

Afghanistan

A circular presentation plate with a small foot, fashioned from rich blue lapis lazuli having pyrite inclusions. *Diameter 12in*

\$700 - 900

1013

PAIR OF LAPIS AND RHODOCHROSITE OBELISKS

Formed of sections of lapis lazuli from Chile and rhodochrosite from Argentina, this is an elegant and decorative pair. *Height 16 in*

\$1,000 - 1,500

1014

PAIR OF LAPIS LAZULI MOSAIC VASES

Afghanistan

Each of tapering form, composed of geometric sections of polished lapis lazuli adhered to a base of white marble. *Height 12 in*

\$800 - 1,200



1015

1015

LAPIS LAZULI BOX

This well-crafted presentation box is formed of a single slab of polished Afghani lapis lazuli to the lid having the sides well-matched at the seams. Adorned with gilded metal fittings at the corners and forming the ring thumbpiece, the hinged lid opening to reveal a crushed velvet lined interior. Raised on four bun feet with metal plate reinforcing the bottom.

Measuring 8 1/4 x 6 x 3 in

\$2,000 - 3,000



1016

1016

**LAPIS LAZULI INTARSIA BOX
DECORATED WITH CRANES**

with applied gilt-metal decoration of seven cranes in flight, with gilt-metal thumbpiece. the hinged lid opening to reveal a bluish-purple crushed velvet lined interior. Raised on four acanthus leaf decorated feet, the underside of the box completed with a gilt-metal plate. *Measuring 6 1/2 x 4 3/4 x 2 in*

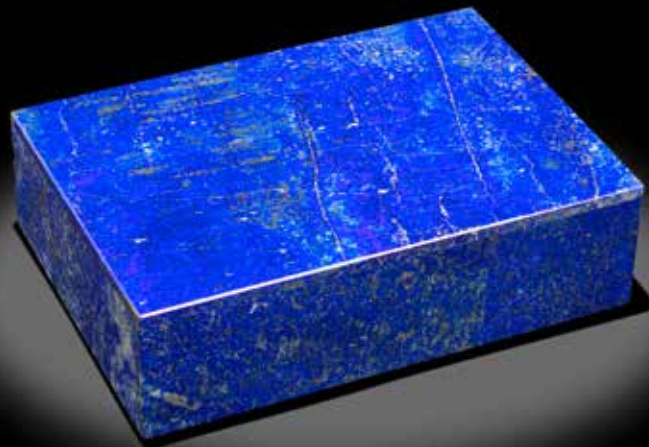
\$1,500 - 2,000

1017

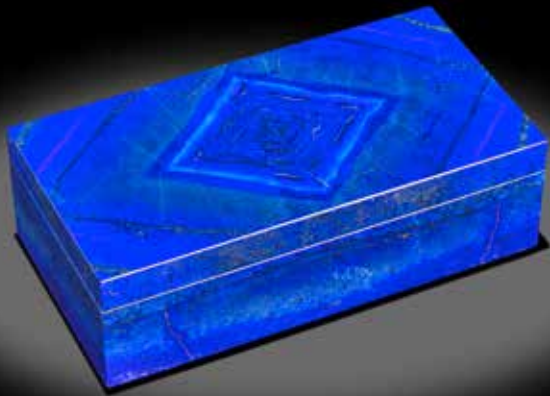
FINE LAPIS LAZULI BOX

Composed of large slabs of rich blue Afghani lapis lazuli, flecked with pyrite, well matched at the seams, the hinged lid with brass piano hinge opening to reveal a black onyx lined interior with black velvet. *Measuring 6 1/4 x 4 1/2 x 1 3/4 in*

\$1,000 - 1,500



1017



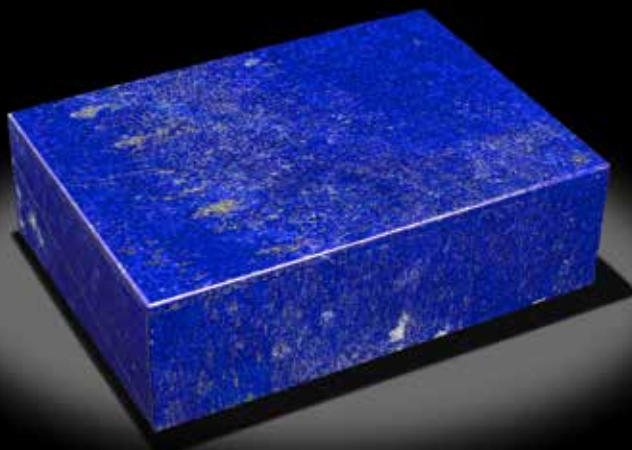
1018

1018

LAPIS LAZULI INTARSIA BOX

Formed of beautiful polished and book-matched slabs of vivid blue lapis lazuli from Afghanistan which have been beautifully matched at the seams. Light flecks of pyrite, naturally appearing in lines provide a rich color contrast. The hinged lid opening to reveal a wood-lined interior. *Measuring 5 3/4 x 3 x 1 3/4in*

\$2,500 - 3,000



1019

1019

LARGE AND IMPRESSIVE LAPIS LAZULI INTARSIA BOX

The lid formed of a single large slab of gem-quality lapis lazuli well-matched at the seams, having extensive pyrite flecks which give the box a rich appearance. The piano-hinged lid opening to reveal a black onyx sides to the interior with velvet lining the bottom and inside of the lid. *Measuring 8 x 6 x 2 1/2 in*

\$1,500 - 2,000

1020^w

LAPIS LAZULI SCULPTURE

Afghanistan

The tall, elegant free-form sculpture, showing extensive areas of gem blue lapis lazuli with veining of white calcite also visible as well as flecks of pyrite. *Weighing approximately 84.4 lbs (38.5 kilos) and measuring 31 x 11 x 3 1/2 in*

\$2,000 - 3,000

Offered on a custom-fitted wooden base.

1021

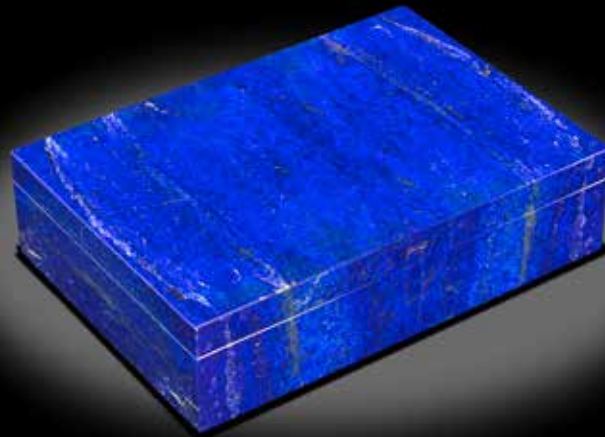
LARGE LAPIS INTARSIA BOX

Formed of polished slabs of gem-grade lapis lazuli from Afghanistan, beautifully matched at the seams for patterning. The lapis is a deep, rich blue, with little calcite present and is flecked with golden pyrite. *Measuring 6 3/4 x x 4 1/2 x 1 3/4 in*

\$3,000 - 4,000



1020



1021



1022

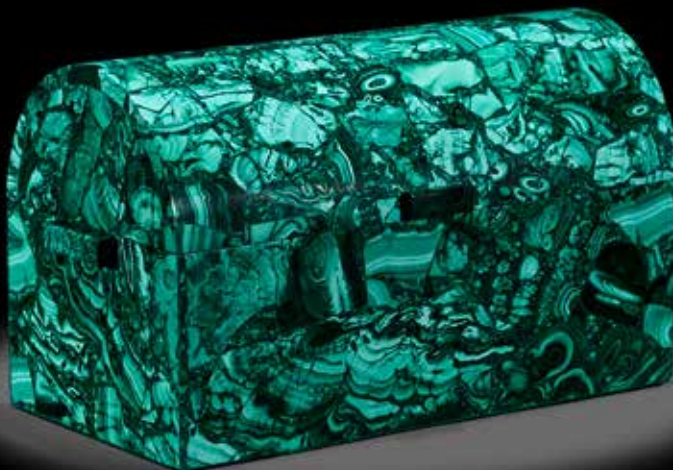
1022

**LAPIS LAZULI FREE-FORM SCULPTURE
WITH WOOD BASE**

Afghanistan

Sculpted as a large slab of lapis lazuli polished on all sides to reveal the rich blue color and flecks of pyrite. *Measuring 18 x 8 x 1 1/2 inches including the removable wooden base.*

\$800 - 1,000



1023

1023

MALACHITE BOX WITH DOMED LID

Democratic Republic of Congo

A large presentation box, formed as a mosaic of malachite sections, of novel form for having a domed top. *Measuring 10 1/4 x 6 1/4 x 5 in*

\$1,500 - 2,000



1024 ^w

**MALACHITE, DOLERITE AND
KASCHOLONG OPAL CHESS SET**

Fabricated in Russia, the chess board consisting of black dolerite squares alternating with squares of white Kascholong Opal. The chess pieces are carved of malachite, with brass fittings. *Measuring 17 x 17 in*

\$3,000 - 5,000



1025

1025

**VERY LARGE AND IMPRESSIVE
MALACHITE INTARSIA BOX**

This is a large scale, impressive intarsia box, formed of malachite sections from the Democratic Republic of Congo. The sides of the box are 3/4 inches thick, with gilt-metal thumbpiece and floral decoration to the four corners, raised on four lion's paw feet. The hinged lid, opening to reveal a gold chain which secures it from opening too far. *Measuring 12 x 9 x 6 in*

\$3,000 - 4,000



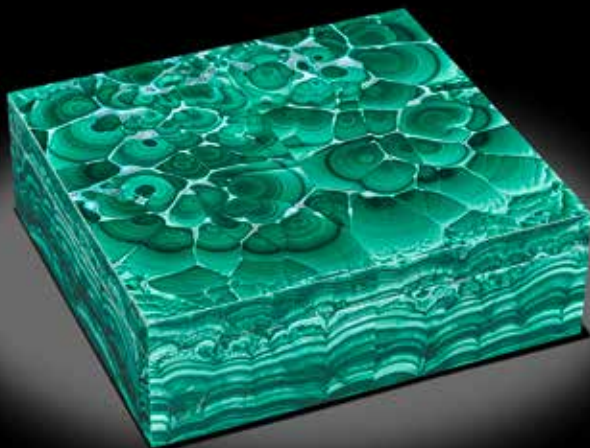
1026

1026

LARGE MALACHITE INTARSIA BOX

Formed of polished sections of malachite, showing the rich banding of growth formation and botryoidal formation in cross-section. With piano-hinged lid, opening to reveal a black onyx and velvet lined interior. *Measuring 10in x 6in x 2 1/2in*

\$1,500 - 2,000



1027

1027

**CHRYSOCOLLA AND MALACHITE BOX
BY KONSTANTIN LIBMAN**

Formed of polished slabs of fine quality chrysocolla and malachite from the Democratic Republic of Congo, the hinged lid opening to reveal a wood-lined interior. *Measuring 5 1/2 x 5 1/4 x 2 in*

\$2,500 - 3,500

1028 ^w

**MONUMENTAL PAIR OF MALACHITE
OBELISKS**

Of classical form, designed with a stepped base and panels, formed of a mosaic of malachite sections originating from the Democratic Republic of Congo, beautifully polished and matched for patterning. *Height 6 ft 7 in. Bases measuring 16 x 16 in*

\$25,000 - 35,000





1029

1029

MALACHITE THREE-PIECE GARNITURE

Comprised of Russian malachite, consisting of a pair of candelsticks with gilt-metal *putti* decoration, *height 8 3/4 in*; together with a malachite intarsia box, with malachite cabochon thumbpiece and four standing *putti* feet. *Measuring 7 1/2 x 5 1/2 x 3 in (3)*

\$2,500 - 3,500



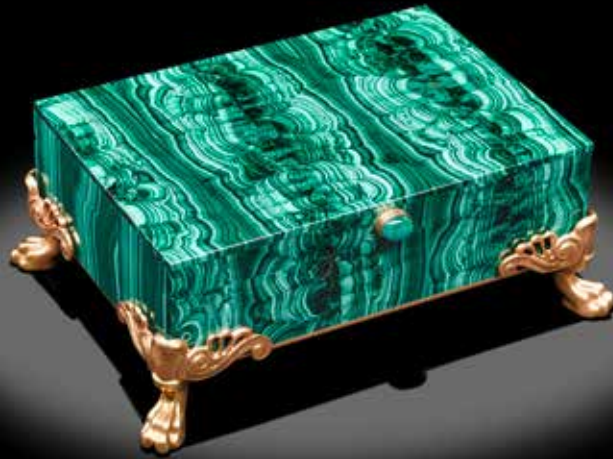
1030

1030

MALACHITE INTARSIA BOX WITH BRONZE FITTINGS

The box formed as a mosaic of malachite sections from the Democratic Republic of Congo. The box is embellished with a bronze fitting in the form of a lizard, which forms the thumbpiece, and raised on four claw-form feet, with bronze handles. The lid opens to reveal a green crushed velvet lined interior. *Measuring 15 x 11 x 6 in*

\$3,500 - 4,500



1031

1031

MALACHITE INTARSIA BOX

The lid formed with beautifully matched seams of malachite from the Democratic Republic of Congo, the piano-hinged lid opening to reveal an interior lined with crushed green velvet, the thumbpiece formed of an oval cabochon of malachite, raised on four lion's paw feet formed of gilded metal, the base completed with a metal plate to the underside. *Measuring 7 x 5 x 2 1/2 in*

\$1,500 - 2,000

1032^w

CONTEMPORARY NEPHRITE JADE SCULPTURE

British Columbia

A very large slab of rich green nephrite with white veining fashioned into a contemporary sculpture of trapezoidal outline. Polished on all sides to a mirror bright finish. *Weighing approximately 42lbs and measuring 36 x 12 x 1 1/2in (height 37 in with base)*

\$1,000 - 1,500

Offered on a custom-fitted wooden stand.



1032



1033



1034

1033^w

**BLACK OBSIDIAN SLAB ON METAL
BASE**

Mexico

Composed of a single slab of a very large boulder of natural black obsidian which has been beautifully polished to reveal the natural sheen whilst the edges have been left with their natural surfaces. *Approximate height with base 19 5/8in; length 48in; width 36in*

\$1,500 - 2,000

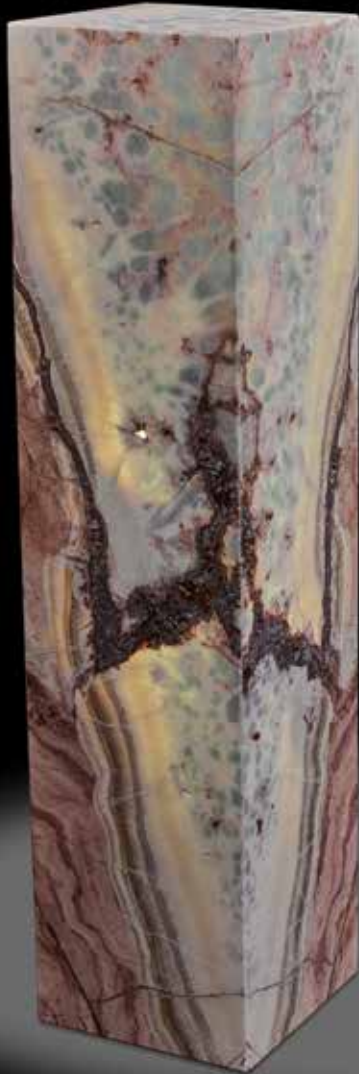
1034^w

POLISHED ONYX LUMINAIRE

Mexico

Honed to a bright sheen, this decorative light fixture appears more luminous due to the high degree of polish. *Height 59 x 12 x 12 in*

\$2,500 - 3,500



1035^w

BANDED ONYX LUMINAIRES--“CHERRY BLOSSOM BLUE”

Mexico

A matched pair of calcite onyx luminaires, having a unique blend of colors ranging from pink to black to blue. They were dubbed “cherry blossom blue” due to the pink areas resembling cherry blossom amidst patches of blue “sky”. These luminaires are cut from large onyx boulders mined in central Mexico. The slabs are cut 1/4 inch thick and the panels are book matched to have continuous matching patterns. The panels are mitered for an exact fit with a closed fitted top as well. Beautiful either when illuminated or when observed in natural light, they provide a beautiful ambient light source suitable for either residential or corporate interiors with their stunning patterns and movement.

Measuring 59 x 12 x 12in and 49 x 12 x 12in

\$4,000 - 6,000



1036



1037

1036^w

BANDED ONYX BOWL

Mexico

Comprised of calcite or aragonite and travertine, this decorative mineral exhibits color banding from layer deposition. Originating in Central Mexico, this fine decorative bowl follows a free-form outline and displays naturally scalloped edges and the dramatic banding for which this mineral is prized. *Measuring 21 1/4 x 18 1/4 x 6 in*

\$700 - 900

1037

TRANSLUCENT ONYX AND LAPIS LAZULI BOX

Mostly likely made in England in the 1920s, the present box is formed of translucent slabs of polished white onyx, and trimmed with lapis lazuli at the edges and recessed thumbpiece. With piano-hinged lid and rounded corners. *Measuring 6 3/4 x 4 x 2 in*

\$1,200 - 1,500



1038

1038^w

**PAIR OF MARBLE AND IRON PYRITE
SPHERES ON SILVERED WOOD BASES**

Carved from rough which most likely originated from Peru, these two large, decorative spheres are rare for their size and for being a pair. *Height of each overall with base: 9 1/2 in. Diameters: 7 in*

\$3,000 - 5,000

Offered on two removable silvered wood bases.

1039

PYRITE HEART-SHAPED CARVING

Peru

A heart-form carving, rendered from a single large piece of pyrite, polished to a bright luster. *Measuring 9 x 9 x 2 1/2 in*

\$400 - 600

To be sold without reserve



1039



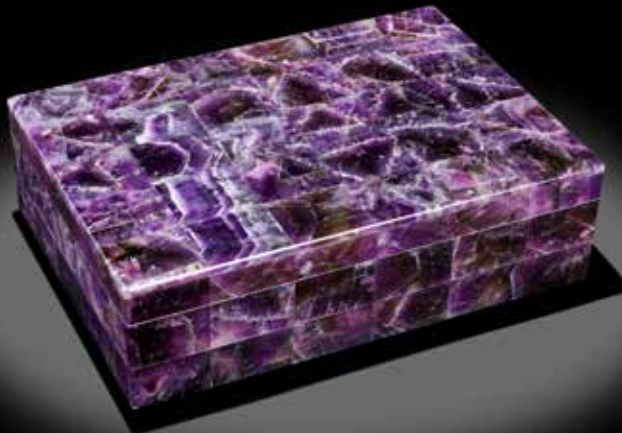
1040

1040
LARGE SMOKY QUARTZ SPHERE

Minas Gerais, Brazil

This large decorative sphere was carved from natural smoky quartz. The excellent polish reveals its relatively high degree of transparency for the species. *Diameter 7 1/2in*

\$2,000 - 3,000



1041

1041
AMETHYST INTARSIA BOX

Composed of rectangular, polished sections of amethyst, each having a fascinating pattern of color zoning and patterning. With concealed piano hinge, the lid opening to reveal a Quartzite interior lined with black velvet. *Measuring 8in x 6in x 2 1/2in*

\$1,500 - 2,000



1042

1042
AMETHYST INTARSIA TISSUE BOX

Composed of rectangular panels of amethyst pieced together over a quartzite layer, to cover the surface of the lid and base. Having a removable lid with aperture for removal of tissues. *Measuring 9 1/4 x 5 1/4 x 3in*

\$1,500 - 2,000



1043

NATURAL CITRINE SPHERE

Brazil

Carved of nearly optically clear natural, unenhanced citrine, this fine sphere has been polished to a high luster. The art of sphere making involves considerable loss of rough to realize such a fine gem-quality piece.

Weighing approximately 7460 carats (1.49 kilos). Diameter 3 3/4 in

\$9,000 - 12,000



1044



1045

1044

ROCK CRYSTAL QUARTZ SPHERE

Brazil

Revered for centuries for its natural metaphysical properties, rock crystal quartz continues to be an important mineral used for healing. The present polished sphere is considered to be ideal for this purpose. It is well-polished and has moderate to high clarity for the species. *Diameter measuring 5 1/2in (13.9cm)*

\$1,000 - 1,500

To be sold without reserve

1045

SMALL AMETHYST INTARSIA BOX

Composed of rectangular panels of polished bright violet purple amethyst having excellent color zoning and patterning. With concealed brass piano hinge, the lid opening to reveal a white Quartzite and black velvet lined interior. *Measuring 6 1/4 x 4 1/2 x 1 3/4 in*

\$1,000 - 1,500



1046

1046^w

PAIR OF "PINEAPPLE-FORM" ROCK CRYSTAL LAMPS BY PETER MULLER

Brazil

Each base formed of rock crystal quartz, carved in the form of a pineapple, with gold vermeil decoration. *Height with shade: 23 in*

\$7,000 - 9,000

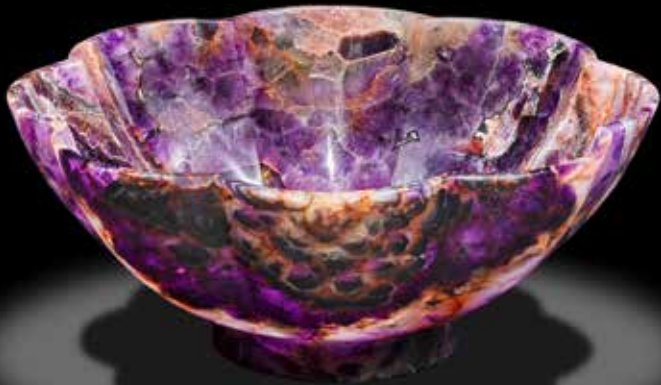
1047

BANDED AMETHYST BOWL

Of lobed form, having excellent translucency which shows the rich tonal hues of lavender to deep violet, raised on a circular foot.

Measuring 11 x 4 1/2 in

\$2,000 - 3,000



1047



1048

1048

TIGER'S EYE QUARTZ BOX

Formed of slabs of South African tiger's eye quartz, beautifully matched at the seams, with a tiger's eye quartz thumbpiece, raised on four brass feet with a brass plate, to the underside. the piano-hinged lid opening to reveal a crushed velvet lined interior. *Measuring 6 x 4 1/2 x 2 in*

\$1,200 - 1,500



1049

1049

PAIR OF BLACK ONYX BOWLS WITH RHODOCHROSITE

Fabricated of black onyx, each tazza is bordered in Argentinian rhodochrosite. *Height 4 1/4 in. Diameters: 6 in (2)*

\$700 - 900

1050

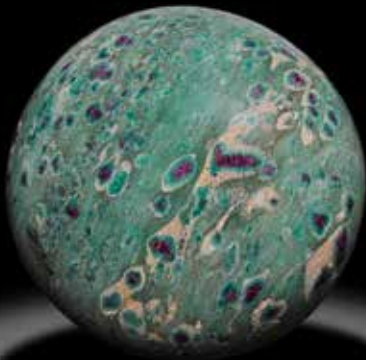
RUBY-IN-FUSCHITE SPHERE

Mysore, India

From a new source in the mountains of India, this highly unusual sphere has richly contrasting colors of purplish-red ruby, green fuschite and white calcite. This material is particularly difficult to polish as a sphere due to the varying hardness of the softer calcite and the significantly harder ruby. *Diameter 7 in*

\$700 - 900

To be sold without reserve



1050



1051^w

SANDSTONE WALL PLAQUE--“A SANDSTONE VALENTINE”

Kanab, Utah

Popularly known as wonderstone, or picture stone, for its beautifully contrasting varying, or sedimentary layers, this aesthetically appealing example, cut in two bookmatched slabs, forms a unique heart-shaped presentation – a valentine in sandstone.

Mounted on fabric in a wooden frame. *Frame measures 36 5/8 x 35in*

\$900 - 1,200

To be sold without reserve



1052^w

PAIR OF SODALITE TABLES

Brazil

These spectacular tabletops are near-consecutive cross-section slices of the same massive boulder of sodalite. Cutting such a boulder would have been a feat in and of itself. They are polished on one side and still retain the natural boulder edges. On black metal bases. *One table top measuring 29 x 20 x 1 3/4 in. Height overall 30 1/2in (2)*

\$1,500 - 2,000



1053^w

MONUMENTAL PAIR OF SODALITE MOSAIC OBELISKS

Brazil

Sure to create a dramatic statement in either a corporate or residential interior, each impressive obelisk of tapering form, was created from sections of sodalite which have been polished and pieced together as a mosaic. *Measuring 85 x 16 x 16in*

\$12,000 - 15,000



1054

1054^w

PIETRA DURA INLAID TABLE TOP

Of rectangular outline, inlaid with lapis lazuli, and a variety of jaspers in a table of black marble, the design depicting a trumpet and musical motifs. *Measuring 72 x 48in*

\$3,000 - 4,000



1055

1055^w

PIETRA DURA INLAID TABLE TOP

Of circular outline, this table top is inlaid with lapis lazuli and a variety of colorful jaspers in black marble, and depicts a lyre and vase motif. *Diameter 62 in*

\$3,000 - 4,000

END OF SALE

OFFSITE SOLD PROPERTY STORAGE INFORMATION

Please note that all lots listed at the beginning of our printed catalog, if not removed immediately after the sale, will be transferred to a nearby storage facility. For the convenience of the successful bidder of one or more of these lots, all purchased lots will be transferred to our offsite storage together. Please read the Conditions of Sale regarding the removal of sold lots.

Bonhams' storage and logistics partner is Box, Pack and Ship LLC, a well-known organization that specializes in crating, packaging and shipping.

Our storage and logistics partnership provides several beneficial services. The first being 5 days of free storage.

- During this auction, clients will be expected to pick up all property from Bonhams by 5pm on Tuesday, May 21, 2019.
- All items listed at the beginning of our printed catalog, along with all other items purchased, if not removed immediately after the sale, will be transferred to Box, Pack and Ship LLC warehouse. With an appointment made 24 hours in advance, clients can pick up their property at 3800 S. Main Street, Los Angeles, CA 90037.
- Box, Pack and Ship LLC will charge an uplift fee to transport your items to their warehouse. Small items that can be handled easily by one person will be charged \$50. Larger items that can still be handled by one person will be charged \$85. Large items that require two people to handle will be charged \$100. Charges will be payable directly to Box, Pack and Ship LLC. Should you choose to have Box, Pack and Ship LLC ship or deliver your property, this uplift fee will be waived.
- Clients will have 5 days of free storage to retrieve their property or make arrangements with Box, Pack and Ship LLC to pack and ship their property. Storage fees will begin to accrue on the 6th day of storage.
- Retrieval from the offsite warehouse is by appointment only. Clients must call 24 hours in advance. Clients can utilize the delivery services offered by Box, Pack and Ship LLC or clients may make their own arrangements. Please call +1 (800) 674-4705.
- Box, Pack and Ship LLC is available to ship internationally. They offer importing and exporting services. Clients can select either airfreight or ocean cargo delivery options, which range from door-to-port, door-to-airport with door-to-door service also available. Clients can ship one item, co-load or container load at a discounted rate through Box, Pack and Ship LLC. Please call +1 (800) 674-4705 for more information.
- All purchases not designated for offsite storage will remain onsite at Bonhams for a period of 21 days beginning the date of the auction. During this 21 day period, clients may remove such property themselves, make arrangements with the Bonhams packaging and shipping department or provide their own shipper for removal of all property. If a client does not retrieve his/her property or finalize shipping arrangements within 21 days, the purchases will be removed to the offsite storage facility of Box, Pack and Ship LLC. Again, uplift charges for packing and transport from our gallery to Box, Pack and Ship LLC will be charged by Box, Pack and Ship LLC.
- Payment of the hammer price, premium and any applicable sales taxes must be made directly to Bonhams prior to the release of property. Any removal, storage or other fees due to Box, Pack and Ship LLC should be made directly to Box, Pack and Ship LLC.
- Change of shipping address must be authorized by Bonhams Revenue Manager, Martin Romero, before Box, Pack and Ship LLC will be permitted to re-route your purchases.

LOTS TO BE REMOVED TO STORAGE:

802	1022
807	1024
808	1028
810	1032
813	1033
818	1034
827	1035
831	1036
832	1038
840	1046
1004	1051
1007	1052
1008	1053
1011	1054
1020	1055

CONDITIONS OF SALE

The following Conditions of Sale, as amended by any published or posted notices or verbal announcements during the sale, constitute the entire terms and conditions on which property listed in the catalog shall be offered for sale or sold by Bonhams & Butterfields Auctioneers Corp. and any consignor of such property for whom we act as agent. If live online bidding is available for the subject auction, additional terms and conditions of sale relating to online bidding will apply; see www.bonhams.com/WebTerms for the supplemental terms. As used herein, "Bonhams," "we" and "us" refer to Bonhams & Butterfields Auctioneers Corp.

1. As used herein, the term "bid price" means the price at which a lot is successfully knocked down to the purchaser. The term "purchase price" means the aggregate of (a) the bid price, (b) a PREMIUM retained by us and payable by the purchaser EQUAL TO 25% OF THE FIRST \$250,000 OF THE BID PRICE, 20% OF THE AMOUNT OF THE BID PRICE ABOVE \$250,000 UP TO AND INCLUDING \$4,000,000, AND 12.5% OF THE AMOUNT OF THE BID PRICE OVER \$4,000,000, and (c) unless the purchaser is exempt by law from the payment thereof, any Alabama, Arizona, California, Colorado, Connecticut, Florida, Georgia, Hawaii, Idaho, Illinois, Iowa, Indiana, Kentucky, Louisiana, Maine, Massachusetts, Michigan, Minnesota, Nevada, New Jersey, New York, North Carolina, Ohio, Pennsylvania, Rhode Island, Texas, Utah, Virginia, Washington, D.C., Washington state, Wisconsin, Wyoming or other state or local sales tax (or compensating use tax) and other applicable taxes. With regard to New York sales tax, please refer to the "Sales and Use Tax" section of these Conditions of Sale.

2. On the fall of the auctioneer's hammer, the highest bidder shall have purchased the offered lot in accordance and subject to compliance with all of the conditions set forth herein and (a) assumes full risk and responsibility therefor, (b) if requested will sign a confirmation of purchase, and (c) will pay the purchase price in full or such part as we may require for all lots purchased. No lot may be transferred. Any person placing a bid as agent on behalf of another (whether or not such person has disclosed that fact or the identity of the principal) may be jointly and severally liable with the principal under any contract resulting from the acceptance of a bid.

Unless otherwise agreed, payment in good funds is due and payable within five (5) business days following the auction sale. Whenever the purchaser pays only a part of the total purchase price for one or more lots purchased, we may apply such payments, in our sole discretion, to the lot or lots we choose. Payment will not be deemed made in full until we have collected good funds for all amounts due.

Payment for purchases may be made in or by (a) cash, (b) cashier's check or money order, (c) personal check with approved credit drawn on a U.S. bank, (d) wire transfer or other immediate bank transfer, or (e) Visa, MasterCard, American Express or Discover credit, charge or debit card. A processing fee will be assessed on any returned checks. Please note that the amount of cash notes and cash equivalents that can be accepted from a given purchaser may be limited.

To the fullest extent permitted by applicable law: The purchaser grants us a security interest in the property, and we may retain as collateral security for the purchaser's obligations to us, any property and all monies held or received by us for the account of the purchaser, in our possession. We also retain all rights of a secured party under the California Commercial Code. If the foregoing conditions or any other applicable conditions herein are not complied with, in addition to all other remedies available to us and the consignor by law, we may at our election: (a) hold the purchaser liable for the full purchase price and any late charges, collection costs, attorneys' fees and costs, expenses and incidental damages incurred by us or the

consignor arising out of the purchaser's breach; (b) cancel the sale, retaining as liquidated damages all payments made by the purchaser; and/or (c) cancel the sale and/or resell the purchased property, at public auction and/or by private sale, and in such event the purchaser shall be liable for the payment of all consequential damages, including any deficiencies or monetary losses, and all costs and expenses of such sale or sales, our commissions at our standard rates, all other charges due hereunder, all late charges, collection costs, attorneys' fees and costs, expenses and incidental damages. In addition, where two or more amounts are owed in respect of different transactions by the purchaser to us, to Bonhams 1793 Limited and/or to any of our other affiliates, subsidiaries or parent companies worldwide within the Bonhams Group, we reserve the right to apply any monies paid in respect of a transaction to discharge any amount owed by the purchaser. If all fees, commissions, premiums, bid prices and other sums due to us from the purchaser are not paid promptly as provided in these Conditions of Sale, we reserve the right to impose a finance charge equal to 1.5% per month (or, if lower, the maximum nonusurious rate of interest permitted by applicable law), on all amounts due to us beginning on the 31st day following the sale until payment is received, in addition to other remedies available to us by law.

3. We reserve the right to withdraw any property and to divide and combine lots at any time before such property's auction. Unless otherwise announced by the auctioneer at the time of sale, all bids are per lot as numbered in the catalog and no lots shall be divided or combined for sale.

4. We reserve the right to reject a bid from any bidder, to split any bidding increment, and to advance the bidding in any manner the auctioneer may decide. In the event of any dispute between bidders, or in the event the auctioneer doubts the validity of any bid, the auctioneer shall have sole and final discretion either to determine the successful bidder or to re-offer and resell the article in dispute. If any dispute arises after the sale, our sales records shall be conclusive in all respects.

5. If we are prevented by fire, theft or any other reason whatsoever from delivering any property to the purchaser or a sale otherwise cannot be completed, our liability shall be limited to the sum actually paid therefor by the purchaser and shall in no event include any compensatory, incidental or consequential damages.

6. If a lot is offered subject to a reserve, we may implement such reserve by bidding on behalf of the consignor, whether by opening bidding or continuing bidding in response to other bidders until reaching the reserve. If we have an interest in an offered lot and the proceeds therefrom other than our commissions, we may bid therefor to protect such interest. CONSIGNORS ARE NOT ALLOWED TO BID ON THEIR OWN ITEMS.

7. All statements contained in the catalog or in any bill of sale, condition report, invoice or elsewhere as to authorship, period, culture, source, origin, measurement, quality, rarity, provenance, importance, exhibition and literature of historical relevance, or physical condition ARE QUALIFIED STATEMENTS OF OPINION AND NOT REPRESENTATIONS OR WARRANTIES. No employee or agent of Bonhams is authorized to make on our behalf or on that of the consignor any representation or warranty, oral or written, with respect to any property.

8. All purchased property shall be removed from the premises at which the sale is conducted by the date(s) and time(s) set forth in the "Buyer's Guide" portion of this catalog. Property designated with a "W" and associated purchased lots, if not removed promptly following sale, will be transferred to an offsite warehouse at the purchaser's risk and expense, as set forth in more detail in the "Buyer's Guide." Purchased property that is permitted to remain

onsite at Bonhams' facility should be removed at the purchaser's expense not later than 5:00 p.m. Pacific Time five (5) business days following the date of the sale. If not so removed, a storage fee of \$5.00 per lot per day will be payable to us by the purchaser beginning at the close of the 21st day following the sale, and we may thereafter transfer such property to an offsite warehouse at the purchaser's risk and expense. Accounts must be settled in full before property will be released. Packing and handling of purchased lots are the responsibility of the purchaser. Bonhams can provide packing and shipping services for certain items as noted in the "Buyer's Guide" section of the catalog.

9. The copyright in the text of the catalog and the photographs, digital images and illustrations of lots in the catalog belong to Bonhams or its licensors. You will not reproduce or permit anyone else to reproduce such text, photographs, digital images or illustrations without our prior written consent.

10. These Conditions of Sale shall bind the successors and assigns of all bidders and purchasers and inure to the benefit of our successors and assigns. No waiver, amendment or modification of the terms hereof (other than posted notices or oral announcements during the sale) shall bind us unless specifically stated in writing and signed by us. If any part of these Conditions of Sale is for any reason invalid or unenforceable, the rest shall remain valid and enforceable.

11. These Conditions of Sale and the purchaser's and our respective rights and obligations hereunder are governed by the laws of the State of California. By bidding at an auction, each purchaser and bidder agrees to be bound by these Conditions of Sale. Any dispute, controversy or claim arising out of or relating to this agreement, or the breach, termination or validity thereof, brought by or against Bonhams (but not including claims brought against the consignor by the purchaser of lots consigned hereunder) shall be resolved by the procedures set forth below.

MEDIATION AND ARBITRATION PROCEDURES

(a) Within 30 days of written notice that there is a dispute, the parties or their authorized and empowered representatives shall meet by telephone and/or in person to mediate their differences. If the parties agree, a mutually acceptable mediator shall be selected and the parties will equally share such mediator's fees. The mediator shall be a retired judge or an attorney familiar with commercial law and trained in or qualified by experience in handling mediations. Any communications made during the mediation process shall not be admissible in any subsequent arbitration, mediation or judicial proceeding. All proceedings and any resolutions thereof shall be confidential, and the terms governing arbitration set forth in paragraph (c) below shall govern.

(b) If mediation does not resolve all disputes between the parties, or in any event no longer than 60 days after receipt of the written notice of dispute referred to above, the parties shall submit the dispute for binding arbitration before a single neutral arbitrator. Such arbitrator shall be a retired judge or an attorney familiar with commercial law and trained in or qualified by experience in handling arbitrations. Such arbitrator shall make all appropriate disclosures required by law. The arbitrator shall be drawn from a panel of a national arbitration service agreed to by the parties, and shall be selected as follows: (i) If the national arbitration service has specific rules or procedures, those rules or procedures shall be followed; (ii) If the national arbitration service does not have rules or procedures for the selection of an arbitrator, the arbitrator shall be an individual jointly agreed to by the parties. If the parties cannot agree on a national arbitration service, the arbitration shall be conducted by the American Arbitration Association, and the arbitrator shall be selected in accordance with the Rules of

CONDITIONS OF SALE - CONTINUED

the American Arbitration Association. The arbitrator's award shall be in writing and shall set forth findings of fact and legal conclusions.

(c) Unless otherwise agreed to by the parties or provided by the published rules of the national arbitration service:

(i) the arbitration shall occur within 60 days following the selection of the arbitrator;

(ii) the arbitration shall be conducted in the designated location, as follows: (A) in any case in which the subject auction by Bonhams took place or was scheduled to take place in the State of New York or Connecticut or the Commonwealth of Massachusetts, the arbitration shall take place in New York City, New York; (B) in all other cases, the arbitration shall take place in the city of San Francisco, California; and

(iii) discovery and the procedure for the arbitration shall be as follows:

(A) All arbitration proceedings shall be confidential;

(B) The parties shall submit written briefs to the arbitrator no later than 15 days before the arbitration commences;

(C) Discovery, if any, shall be limited as follows: (I) Requests for no more than 10 categories of documents, to be provided to the requesting party within 14 days of written request therefor; (II) No more than two (2) depositions per party, provided however, the deposition(s) are to be completed within one (1) day; (III) Compliance with the above shall be enforced by the arbitrator in accordance with California law;

(D) Each party shall have no longer than eight (8) hours to present its position. The entire hearing before the arbitrator shall not take longer than three (3) consecutive days;

(E) The award shall be made in writing no more than 30 days following the end of the proceeding. Judgment upon the award rendered by the arbitrator may be entered by any court having jurisdiction thereof.

To the fullest extent permitted by law, and except as required by applicable arbitration rules, each party shall bear its own attorneys' fees and costs in connection with the proceedings and shall share equally the fees and expenses of the arbitrator.

LIMITED RIGHT OF RESCISSION

If within one (1) year from the date of sale, the original purchaser (a) gives written notice to us alleging that the identification of Authorship (as defined below) of such lot as set forth in the **BOLD TYPE** heading of the catalog description of such lot (as amended by any saleroom notices or verbal announcements during the sale) is not substantially correct based on a fair reading of the catalog (including the terms of any glossary contained therein), and (b) within 10 days after such notice returns the lot to us in the same condition as at the time of sale, and (c) establishes the allegation in the notice to our satisfaction (including by providing one or more written opinions by recognized experts in the field, as we may reasonably require), then the sale of such lot will be rescinded and, unless we have already paid to the consignor monies owed him in connection with the sale, the original purchase price will be refunded.

If, prior to receiving such notice from the original purchaser alleging such defect, we have paid the consignor monies owed him in connection with the sale, we shall pay the original purchaser the amount of our commissions, any other sale proceeds to which we are entitled and applicable taxes received from the purchaser on the sale and make demand on the consignor to pay the balance of the original purchase price to the original purchaser. Should the consignor fail to pay such amount promptly, we may disclose the identity of the consignor and assign to the original purchaser our rights against the consignor with respect to the lot the sale of which is sought to be rescinded. Upon such disclosure and assignment, any liability of Bonhams as consignor's agent with respect to said lot shall automatically terminate.

The foregoing limited right of rescission is available to the original purchaser only and may not be assigned to or relied upon by any subsequent transferee of the property sold. The purchaser hereby accepts the benefit of the consignor's warranty of title and other representations and warranties made by the consignor for the purchaser's benefit. Nothing in this section shall be construed as an admission by us of any representation of fact, express or implied, obligation or responsibility with respect to any lot. **THE PURCHASER'S SOLE AND EXCLUSIVE**

REMEDY AGAINST BONHAMS FOR ANY REASON WHATSOEVER IS THE LIMITED RIGHT OF RESCISSION DESCRIBED IN THIS SECTION.

"Authorship" means only the identity of the creator, the period, culture and source or origin of the lot, as the case may be, as set forth in the **BOLD TYPE** heading of the print catalog entry. The right of rescission does not extend to: (a) works of art executed before 1870 (unless these works are determined to be counterfeits created since 1870), as this is a matter of current scholarly opinion which can change; (b) titles, descriptions, or other identification of offered lots, which information normally appears in lower case type below the **BOLD TYPE** heading identifying the Authorship; (c) Authorship of any lot where it was specifically mentioned that there exists a conflict of specialist or scholarly opinion regarding the Authorship of the lot at the time of sale; (d) Authorship of any lot which as of the date of sale was in accordance with the then generally-accepted opinion of scholars and specialists regarding the same; or (e) the identification of periods or dates of creation in catalog descriptions which may be proven inaccurate by means of scientific processes that are not generally accepted for use until after publication of the catalog in which the property is offered or that were unreasonably expensive or impractical to use at the time of such publication.

LIMITATION OF LIABILITY

EXCEPT AS EXPRESSLY PROVIDED ABOVE, ALL PROPERTY IS SOLD "AS IS." NEITHER BONHAMS NOR THE CONSIGNOR MAKES ANY REPRESENTATION OR WARRANTY, EXPRESS OR IMPLIED, AS TO THE MERCHANTABILITY, FITNESS OR CONDITION OF THE PROPERTY OR AS TO THE CORRECTNESS OF DESCRIPTION, GENUINENESS, ATTRIBUTION, PROVENANCE OR PERIOD OF THE PROPERTY OR AS TO WHETHER THE PURCHASER ACQUIRES ANY COPYRIGHTS OR OTHER INTELLECTUAL PROPERTY RIGHTS IN LOTS SOLD OR AS TO WHETHER A WORK OF ART IS SUBJECT TO THE ARTIST'S MORAL RIGHTS OR OTHER RESIDUAL RIGHTS OF THE ARTIST. THE PURCHASER EXPRESSLY ACKNOWLEDGES AND AGREES THAT IN NO EVENT SHALL BONHAMS BE LIABLE FOR ANY DAMAGES INCLUDING, WITHOUT LIMITATION, ANY COMPENSATORY, INCIDENTAL OR CONSEQUENTIAL DAMAGES.

SELLER'S GUIDE

SELLING AT AUCTION

Bonhams can help you every step of the way when you are ready to sell art, antiques and collectible items at auction. Our regional offices and representatives throughout the US are available to service all of your needs. Should you have any further questions, please visit our website at www.bonhams.com/us for more information or call our Client Services Department at +1 (323) 850 7500.

AUCTION ESTIMATES

The first step in the auction process is to determine the auction value of your property. Bonhams' world-renowned specialists will evaluate your special items at no charge and in complete confidence. You can obtain an auction estimate in many ways:

- Attend one of our Auction Evaluation Events held regularly at our galleries and in other major metropolitan areas. The updated schedule for Bonhams Auction Evaluation Events is available at www.bonhams.com/us.
- Call our Client Services Department to schedule a private appointment at one of our galleries. If you have a large collection, our specialists can travel, by appointment, to evaluate your property on site.
- Send clear photographs to us of each individual item, including item dimensions and other pertinent information with each picture. Photos should be sent to Bonhams' address in envelopes marked

as "photo auction estimate". Alternatively, you can submit your request using our online form at www.bonhams.com/us. Digital images may be attached to the form. Please limit your images to no more than five (5) per item.

CONSIGNING YOUR PROPERTY

After you receive an estimate, you may consign your property to us for sale in the next appropriate auction. Our staff assists you throughout the process, arranging transportation of your items to our galleries (at the consignor's expense), providing a detailed inventory of your consignment, and reporting the prices realized for each lot. We provide secure storage for your property in our warehouses and all items are insured throughout the auction process. You will receive payment for your property approximately 35 days after completion of sale.

Sales commissions vary with the potential auction value of the property and the particular auction in which the property is offered. Please call us for commission rates.

PROFESSIONAL APPRAISAL SERVICES

Bonhams' specialists conduct insurance and fair market value appraisals for private collectors, corporations, museums, fiduciaries and government entities on a daily basis. Insurance appraisals, used for insurance purposes, reflect the cost of replacing property in today's retail market. Fair market value appraisals are used for estate,

tax and family division purposes and reflect prices paid by a willing buyer to a willing seller.

When we conduct a private appraisal, our specialists will prepare a thorough inventory listing of all your appraised property by category. Valuations, complete descriptions and locations of items are included in the documentation.

Appraisal fees vary according to the nature of the collection, the amount of work involved, the travel distance, and whether the property is subsequently consigned for auction.

Our appraisers are available to help you anywhere and at any time. Please call our Client Services Department to schedule an appraisal.

ESTATE SERVICES

Since 1865, Bonhams has been serving the needs of fiduciaries – lawyers, trust officers, accountants and executors – in the disposition of large and small estates. Our services are specially designed to aid in the efficient appraisal and disposition of fine art, antiques, jewelry, and collectibles. We offer a full range of estate services, ranging from flexible financial terms to tailored accounting for heirs and their agents to world-class marketing and sales support.

For more information or to obtain a detailed Trust and Estates package, please visit our website at www.bonhams.com/us or contact our Client Services Department.

BUYER'S GUIDE

BIDDING & BUYING AT AUCTION

Whether you are an experienced bidder or an enthusiastic novice, auctions provide a stimulating atmosphere unlike any other. Bonhams previews and sales are free and open to the public. As you will find in these directions, bidding and buying at auction is easy and exciting. Should you have any further questions, please visit our website at www.bonhams.com or call our Client Services Department at +1 (323) 850 7500.

Catalogs

Before each auction we publish illustrated catalogs that include dates and times for previews and auctions. Our catalogs also provide descriptions and estimated values for each "lot." A lot may refer to a single item or to a group of items auctioned together. We offer our catalogs by subscription or by single copy. For information on subscribing to our catalogs, you may refer to the subscription form in this catalog, call our Client Services Department, or visit our website at www.bonhams.com/us.

Previews

Auction previews are your chance to inspect each lot prior to the auction. We encourage you to look closely and examine each object on which you may want to bid so that you will know as much as possible about it. Items are sold "as is" and with all faults; illustrations in our catalogs, website and other materials are provided for identification only. At the previews, our staff is always available to answer your questions and guide you through the auction process. Condition reports may be available upon request.

Estimates

Bonhams catalogs include estimates for each lot, exclusive of buyer's premium and tax. The estimates are provided as an approximate guide to current market value and should not be interpreted as a representation or prediction of actual selling prices. They are determined well in advance of a sale and are subject to revision. Please contact us should you have any questions about value estimates.

Reserves

All lots in a catalog are subject to a reserve unless otherwise indicated. The reserve is the minimum price that the seller is willing to accept for a lot. This amount is confidential and does not exceed the low estimated value.

BIDDING AT AUCTION

At Bonhams, you can bid in many ways: in person, via absentee bid, over the phone, or via Bonhams' online bidding facility. Absentee bids can be submitted in person, online, via fax or via email.

A valid Bonhams client account is required to participate in bidding activity. You can obtain registration information online, at the reception desk or by calling our Client Services Department.

By bidding at auction, whether in person or by agent, by absentee bid, telephone, online or other means, the buyer or bidder agrees to be bound by the Conditions of Sale.

Lots are auctioned in consecutive numerical order as they appear in the catalog. Bidding normally begins below the low estimate. The auctioneer will accept bids from interested parties present in the saleroom, from telephone bidders, and from absentee bidders who have left written bids in advance of the sale. The auctioneer may also execute bids on behalf of the consignor up to the amount of the reserve, but never above it.

We assume no responsibility for failure to execute bids for any reason whatsoever.

In Person

If you are planning to bid at auction, you will need to register at the reception desk in order to receive a numbered bid card. To place a bid, hold up your card so that the auctioneer can clearly see it. Decide on the maximum amount that you wish to pay, exclusive of buyer's premium and tax, and continue bidding until your bid prevails or you reach your limit. If you are the successful bidder on a lot, the auctioneer will acknowledge your paddle number and bid amount.

Absentee Bids

As a service to those wishing to place bids, we may at our discretion accept bids without charge in advance of sale by telephone, by facsimile or in writing on bidding forms available from us. "Buy" bids will not be accepted; all bids must state the highest bid price the bidder is willing to pay. Our auction staff will try to bid just as you would, with the goal of obtaining the

item at the lowest bid price possible. In the event identical bids are submitted, the earliest bid submitted will take precedence. Absentee bids shall be executed in competition with other absentee bids, any applicable reserve, and bids from other auction participants. A friend or agent may place bids on your behalf, provided that we have received your written authorization prior to the sale. Absentee bid forms are available in our catalogs, online at www.bonhams.com/us, and at our San Francisco, Los Angeles and New York galleries.

By Telephone

Under special circumstances, we can arrange for you to bid by telephone. To arrange for a telephone bid, please contact our Client Services Department a minimum of 24 hours prior to the sale.

Online

Web users may place absentee bids online from anywhere in the world. To bid online, please visit our website at www.bonhams.com/us.

We are pleased to make our live online bidding facility available to bidders in this sale.

Additional terms and conditions of sale relating to online bidding will apply. Please see www.bonhams.com/25497 or contact the Client Services Department to obtain information and learn how you can register and bid online in this sale.

Bid Increments

Bonhams generally uses the following increment multiples as bidding progresses:

\$50-200	by \$10s
\$200-500	by \$20/50/80s
\$500-1,000	by \$50s
\$1,000-2,000	by \$100s
\$2,000-5,000	by \$200/500/800s
\$5,000-10,000	by \$500s
\$10,000-20,000	by \$1,000s
\$20,000-50,000	by \$2,000/5,000/8,000s
\$50,000-100,000	by \$5,000s
\$100,000-200,000	by \$10,000s
above \$200,000	at auctioneer's discretion

The auctioneer may split or reject any bid at any time at his or her discretion as outlined in the Conditions of Sale.

Currency Converter

Solely for the convenience of bidders, a currency converter may be provided at Bonhams sales. The rates quoted for conversion of other currencies to U.S. Dollars are indications only and should not be relied upon by a bidder, and neither Bonhams nor its agents shall be responsible for any errors or omissions in the operation or accuracy of the currency converter.

Buyer's Premium

A buyer's premium is added to the winning bid price of each individual lot purchased, at the rates set forth in the Conditions of Sale. The winning bid price plus the premium constitute the purchase price for the lot. Applicable sales taxes are computed based on this figure, and the total becomes your final purchase price.

Unless specifically illustrated and noted, fine art frames are not included in the estimate or purchase price. Bonhams accepts no liability for damage or loss to frames during storage or shipment.

All sales are final and subject to the Conditions of Sale found in our catalogs, on our website, and available at the reception desk.

Payment

All buyers are asked to pay and pick up by 3pm on the business day following the auction. Payment may be made to Bonhams by cash, checks drawn on a U.S. bank, money order, wire transfer, or by Visa, MasterCard, American Express or Discover credit or charge card or debit card. All items must be paid for within 5 business days of the sale. Please note that payment by personal or business check may result in property not being released until purchase funds clear our bank.

Sales Tax

Residents of states listed in Paragraph 1 of the Conditions of Sale must pay applicable sales tax. Other state or local taxes (or compensation use taxes) may apply. Sales tax will be automatically added to the invoice unless a valid resale number has been furnished or the property is shipped via common carrier to destinations outside the states listed in

the Conditions of Sale. If you wish to use your resale license please contact Cashiers for our form.

Shipping & Removal

Clients will be expected to pick up all property from Bonhams by 5:00PM on Tuesday, May 21, 2019.

During this period, clients may remove such property themselves, make arrangements with the Bonhams packing and shipping department or their own shipper for removal of all property.

Payment of the hammer price, premium and any applicable sales taxes must be made directly to Bonhams prior to the release of property.

Change of shipping address must be authorized by Bonhams Revenue Manager, Martin Romero, before the Bonhams packing and shipping department will be permitted to reroute your purchases.

Bonhams can accommodate shipping for certain items. Please contact our Cashiers Department for more information or to obtain a quote. Refer to Conditions of Sale for special terms governing the shipment of Arms and Wine. Shipments are made during weekday business hours up to four weeks after payment is received. Carriers are not permitted to deliver to P.O. Boxes.

International buyers are responsible for all import/export customs duties and taxes. An invoice stating the actual purchase price(s) will accompany all international purchases.

Simultaneous sale property collection notice:

If this sale previews in multiple cities, please see the title page for details regarding final location of property for collection.

Auction Results

Auction results are usually available on the next business day following the sale or online at www.bonhams.com/us.

Catalog Order Form

Bonhams

Please check the Auction Catalog(s) you would like to receive, complete the address and payment information below and send the completed form via email to catalogs.us@bonhams.com, or via fax at (415) 861 8951, or mail to:

Bonhams
220 San Bruno Avenue
San Francisco, California 94103

If you have any questions please contact us at +1 (800) 223 2854

Category Name	Internal	Domestic Address*	International Address*	Issues per year**
19th CENTURY PAINTINGS (Including Russian and Dogs in Art)	PIC41	<input type="checkbox"/> \$200	<input type="checkbox"/> \$280	5
20TH CENTURY FURNITURE & DECORATIVE ARTS	FRN21	<input type="checkbox"/> \$160	<input type="checkbox"/> \$200	4
AFRICAN, OCEANIC & PRE-COLUMBIAN ART	TRI12	<input type="checkbox"/> \$120	<input type="checkbox"/> \$150	3
AMERICAN & CALIFORNIA WESTERN PAINTINGS & SCULPTURE	PIC40	<input type="checkbox"/> \$200	<input type="checkbox"/> \$250	5
ARMS, ARMOR AND MODERN SPORTING GUNS	ARM10	<input type="checkbox"/> \$80	<input type="checkbox"/> \$100	2
ASIAN WORKS OF ART	ASN10	<input type="checkbox"/> \$360	<input type="checkbox"/> \$430	9
BONHAMS QUARTERLY MAGAZINE	MAGB	<input type="checkbox"/> \$30		4
BOOKS, MANUSCRIPTS & RELATED CATEGORIES	BKS10	<input type="checkbox"/> \$320	<input type="checkbox"/> \$400	8
COINS AND BANKNOTES	CNS10	<input type="checkbox"/> \$160	<input type="checkbox"/> \$200	4
CONTEMPORARY ART (Including Made in California)	PIC50 & PIC52	<input type="checkbox"/> \$200	<input type="checkbox"/> \$250	5
ENTERTAINMENT MEMORABILIA & COLLECTABLES	COL10	<input type="checkbox"/> \$160	<input type="checkbox"/> \$200	4
EUROPEAN & AMERICAN FURNITURE & DECORATIVE ARTS	FRN20	<input type="checkbox"/> \$320	<input type="checkbox"/> \$400	7
IMPRESSIONIST AND MODERN ART	PIC55	<input type="checkbox"/> \$100	<input type="checkbox"/> \$120	2
INDIAN, HIMALAYAN & SOUTHEAST ASIAN ART	ASN12	<input type="checkbox"/> \$80	<input type="checkbox"/> \$100	2
JAPANESE WORKS OF ART	ASN11	<input type="checkbox"/> \$120	<input type="checkbox"/> \$140	3
JEWELRY	JWL10	<input type="checkbox"/> \$320	<input type="checkbox"/> \$400	8
MADE IN CALIFORNIA CONTEMPORARY ART	PIC52	<input type="checkbox"/> \$80	<input type="checkbox"/> \$100	2
MARITIME PAINTINGS AND DECORATIVE ARTS	COL11	<input type="checkbox"/> \$80	<input type="checkbox"/> \$100	2
MOTOR CARS, MOTORCYCLES & AUTOMOBILIA	MOT10 & MOT20	<input type="checkbox"/> \$330	<input type="checkbox"/> \$390	6
MOTORCYCLES	MOT20	<input type="checkbox"/> \$40	<input type="checkbox"/> \$50	1
NATIVE AMERICAN ART	NTV10	<input type="checkbox"/> \$120	<input type="checkbox"/> \$150	3
NATURAL HISTORY, GEMS, MINERALS & LAPIDARY	NAT10	<input type="checkbox"/> \$120	<input type="checkbox"/> \$150	3
ORIENTAL RUGS AND CARPETS	CPT10	<input type="checkbox"/> \$160	<input type="checkbox"/> \$200	3
PHOTOGRAPHS	PIC44	<input type="checkbox"/> \$120	<input type="checkbox"/> \$150	3
PRINTS	PIC43	<input type="checkbox"/> \$120	<input type="checkbox"/> \$150	3
SPACE MEMORABILIA	BKS11	<input type="checkbox"/> \$40	<input type="checkbox"/> \$50	1
WATCHES	JWL11	<input type="checkbox"/> \$120	<input type="checkbox"/> \$150	3
WINES & WHISKY	WIN10	<input type="checkbox"/> \$280	<input type="checkbox"/> \$350	5
WRITING INSTRUMENTS	COL20	<input type="checkbox"/> \$50	<input type="checkbox"/> \$70	2
ALL CATEGORIES	ALLCAT	<input type="checkbox"/> \$4,500	<input type="checkbox"/> \$5,600	112

**The number of auction catalogs and sales listed for a subscription are strictly estimates. We are not responsible for refunds or credits if the number of sales alters from the estimate. Some of the above categories may include our auctions in other locations.

Method of Payment

Check/Money Order enclosed for \$: _____
Payable to Bonhams & Butterfields

Visa Mastercard American Express

Card Number _____ 16-digit Number

Expiration Date ____ / ____ CVV ____

Cardholder Name _____

Address _____

City _____ State __ Zip _____ Country _____

Signature _____ Date _____

Send Catalogs to:

Name _____

Address _____

City _____ State __ Zip _____ Country _____

Telephone _____ Fax _____

E-mail _____

Client Number (internal use only) _____

Bonhams Specialist Departments

19th Century Paintings

London
Charles O' Brien
+44 20 7468 8360
New York
Madalina Lazen
+1 212 644 9108

20th Century British Art

London
Matthew Bradbury
+44 20 7468 8295

20th Century Fine Art

San Francisco
Sonja Moro
+1 415 694 9002

Aboriginal Art

Australia
Francesca Cavazzini
+61 2 8412 2222

African, Oceanic & Pre-Columbian Art

Los Angeles
Fredric W. Backlar
+1 323 436 5416 •

American Paintings

New York
Jennifer Jacobsen
+1 917 206 1699

Antiquities

London
Francesca Hickin
+44 20 7468 8226

Antique Arms & Armour

London
David Williams
+44 20 7393 3807

Art Collections, Estates & Valuations

London
Harvey Cammell
+44 (0) 20 7468 8340
New York
Sherri Cohen
+1 917 206 1671
Los Angeles
Leslie Wright
+1 323 436 5408
Joseph Francaviglia
+1 323 436 5443
Lydia Ganley
+1 323 436 4496
San Francisco
Victoria Richardson
+1 415 503 3207
Celeste Smith
+1 415 503 3214

Australian Art

Australia
Merryn Schriever
+61 2 8412 2222 Alex Clark
+61 3 8640 4088

Australian Colonial Furniture and Australiana

+61 2 8412 2222

Books, Maps & Manuscripts

London
Matthew Haley
+44 20 7393 3817
New York
Ian Ehling
+1 212 644 9094 Darren Sutherland
+1 212 461 6531

Los Angeles

Catherine Williamson
+1 323 436 5442

San Francisco

Adam Stackhouse
+1 415 503 3266

British & European Glass

London
John Sandon
+44 20 7468 8244

British Ceramics

London
John Sandon
+44 20 7468 8244

California & Western Paintings & Sculpture

Los Angeles
Scot Levitt
+1 323 436 5425
Kathy Wong
+1 323 436 5415
San Francisco
Aaron Bastian
+1 415 503 3241

Carpets

London
Helena Gumley-Mason
+44 20 8393 2615

Chinese & Asian Art

London
Asaph Hyman
+44 20 7468 5888
Rosangela Assennato
+44 20 7393 3883
Edinburgh
Ian Glennie
+44 131 240 2299
New York
Bruce MacLaren
+1 917 206 1677
Los Angeles
Rachel Du
+1 323 436 5587
San Francisco
Dessa Goddard
+1 415 503 3333
Hong Kong
Xibo Wang
+852 3607 0010
Sydney
Yvett Klein
+61 2 8412 2231

Chinese Paintings

Hong Kong
Iris Miao,
+852 3607 0011

Clocks

London
James Stratton
+44 20 7468 8364
New York
Jonathan Snellenburg
+1 212 461 6530

Coins & Medals

London
John Millensted
+44 20 7393 3914
Los Angeles
Paul Song
+1 323 436 5455

Entertainment Memorabilia

London
Katherine Schofield
+44 20 7393 3871
Los Angeles
Catherine Williamson
+1 323 436 5442
Dana Hawkes
+1 978 283 1518

European Ceramics

London
Sebastian Kuhn
+44 20 7468 8384

European Paintings

London
Charles O' Brien
+44 20 7468 8360
New York
Madalina Lazen
+1 212 644 9108
Los Angeles
Mark Fisher
+1 323 436 5488
Rocco Rich
+1 323 436 5410

European Sculptures & Works of Art

London
Michael Lake
+44 20 8963 6813

Furniture and Decorative Art

London
Thomas Moore
+44 20 8963 2816
Los Angeles
Angela Past
+1 323 436 5422
Anna Hicks
+1 323 436 5463

Greek Art

London
Anastasia Orfanidou
+44 20 7468 8356

Golf Sporting Memorabilia

Edinburgh
Kevin McGimpsey
+44 131 240 2296
Hamish Wilson
+44 131 240 0916

Irish Art

London
Penny Day
+44 20 7468 8366

Impressionist & Modern Art

London
India Phillips
+44 20 7468 8328
New York
Caitlyn Pickens
+1 212 644 9135
Los Angeles
Kathy Wong
+1 323 436 5415

Indian, Himalayan & Southeast Asian Art

New York
Mark Rasmussen
+1 917 206 1688
Hong Kong
Edward Wilkinson
+852 2918 4321

Islamic & Indian Art

London
Oliver White
+44 20 7468 8303

Japanese Art

London
Suzannah Yip
+44 20 7468 8368
New York
Jeff Olson
+1 212 461 6516

Jewellery

London
Jean Ghika
+44 20 7468 8282
Emily Barber
+44 20 7468 8284
New York
Brett O'Connor
+1 212 461 6525
Caroline Morrissey
+1 212 644 9046
Camille Barbier
+1 212 644 9035
Los Angeles
Emily Waterfall
+1 323 436 5426
San Francisco
Shannon Beck
+1 415 503 3306
Hong Kong
Paul Redmayne
+852 3607 0006

Marine Art

London
Veronique Scorer
+44 20 7393 3962

Mechanical Music

London
Jon Baddeley
+44 20 7393 3872

**Modern & Contemporary
African Art**

London
Giles Peppiatt
+ 44 20 7468 8355
New York
Hayley Grundy
+1 917 206 1624

**Modern & Contemporary
Middle Eastern Art**

London
Nima Sagharchi
+44 20 7468 8342

**Modern & Contemporary
South Asian Art**

London
Tahmina Ghaffar
+44 207 468 8382

**Modern Decorative
Art + Design**

London
Mark Oliver
+44 20 7393 3856
New York
Benjamin Walker
+1 212 710 1306
Dan Tolson
+1 917 206 1611
Los Angeles
Jason Stein
+1 323 436 5466

Motor Cars

London
Tim Schofield
+44 20 7468 5804
New York
Rupert Banner
+1 212 461 6515
Eric Minoff
1 917 206 1630
Evan Ide
+1 917 340 4657
Los Angeles
Jakob Greisen
+1 415 503 3284
Michael Caimano
+1 929 666 2243
San Francisco
Mark Osborne
+1 415 503 3353
Europe
Phillip Kantor
+32 476 879 471

Automobilia

London
Toby Wilson
+44 20 8963 2842
Adrian Pipiros
+44 20 8963 2840

Motorcycles

London
Ben Walker
+44 20 8963 2819
James Stensel
+44 20 8963 2818
Los Angeles
Craig Mallery
+1 323 436 5470

Museum Services

San Francisco
Laura King Pfaff
+1 415 503 3210

Native American Art

San Francisco
Ingmars Lindbergs
+1 415 503 3393

Natural History

Los Angeles
Claudia Florian
+1 323 436 5437
Thomas E. Lindgren
+1 310 469 8567 •

Old Master Pictures

London
Andrew Mckenzie
+44 20 7468 8261
Los Angeles
Mark Fisher
+1 323 436 5488

Orientalist Art

London
Charles O'Brien
+44 20 7468 8360

Photography

New York
Laura Paterson
+1 917 206 1653
Los Angeles & San Francisco
Morisa Rosenberg
+1 323 436 5435
+1 415 503 3259

**Post-War and
Contemporary Art**

London
Ralph Taylor
+44 20 7447 7403
New York
Muys Sniijders,
+212 644 9020
Jacqueline Towers-Perkins,
+1 212 644 9039
Lisa De Simone,
+1 917 206 1607
Los Angeles
Sharon Squires
+1 323 436 5404
Laura Bjorstad
+1 323 436 5446

Prints and Multiples

London
Lucia Tro Santafe
+44 20 7468 8262
New York
Deborah Ripley
+1 212 644 9059
Los Angeles
Morisa Rosenberg
+1 323 447 9374

Russian Art

London
Daria Khristova
+44 20 7468 8334
New York
Yelena Harbick
+1 212 644 9136

Scientific Instruments

London
Jon Baddeley
+44 20 7393 3872
New York
Jonathan Snellenburg
+1 212 461 6530

Scottish Pictures

Edinburgh
Chris Brickley
+44 131 240 2297

Silver & Gold Boxes

London
Ellis Finch
+44 20 7393 3973

Sporting Guns

London
Patrick Hawes
+44 20 7393 3815

Space History

San Francisco
Adam Stackhouse
+1 415 503 3266

Travel Pictures

London
Veronique Scorer
+44 20 7393 3962

**Watches &
Wristwatches**

London
Jonathan Darracott
+44 20 7447 7412
New York
Jonathan Snellenburg
+1 212 461 6530
Hong Kong
Tim Bourne
+852 3607 0021

Whisky

Edinburgh
Martin Green
+44 131 225 2266
Hong Kong
Daniel Lam
+852 2918 4321

Wine

London
Richard Harvey
+44 20 7468 5811
San Francisco
Christine Ballard
+1 415 503 3221
Hong Kong
Daniel Lam
+852 2918 4321

Client Services Departments**U.S.A.****San Francisco**

(415) 861 7500
(415) 861 8951 fax
Monday - Friday, 9am to 5pm

Los Angeles

(323) 850 7500
(323) 850 6090 fax
Monday - Friday, 9am to 5pm

New York

(212) 644 9001
(212) 644 9009 fax
Monday - Friday, 9am to 5pm

Toll Free

(800) 223 2854

U.K.

Monday to Friday 8.30 to 6.00 +44
(0) 20 7447 7447

Bids

+44 (0) 20 7447 7447
+44 (0) 20 7447 7401 fax
To bid via the internet please visit
bonhams.com

• Indicates independent contractor

Bonhams Global Network

International Salerooms

London

101 New Bond Street
London W1S 1SR
+44 20 7447 7447
+44 20 7447 7400 fax

New York

580 Madison Avenue
New York, NY
10022
+1 (212) 644 9001
+1 (212) 644 9007 fax

Hong Kong

Suite 2001
One Pacific Place
88 Queensway
Admiralty
Hong Kong
+852 2918 4321
+852 2918 4320 fax

London

Montpelier Street London
SW7 1HH
+44 20 7393 3900
+44 20 7393 3905 fax

Offices and Associated Companies

AFRICA

Nigeria

Neil Coventry
+234 (0)8110 033 792
+27 (0)7611 20171
neil.coventry@bonhams.com

South Africa - Johannesburg

Penny Culverwell
+27 (0)71 342 2670
penny.culverwell@bonhams.com

AUSTRALIA

Sydney

97-99 Queen Street,
Woollahra, NSW 2025
Australia
+61 (0) 2 8412 2222
+61 (0) 2 9475 4110 fax
info.aus@bonhams.com

Melbourne

Como House
Como Avenue
South Yarra
Melbourne VIC 3141
Australia
+61 (0) 3 8640 4088
+61 (0) 2 9475 4110 fax
info.aus@bonhams.com

ASIA

Beijing

Jessica Zhang
Unit S102A, Beijing
Lufthansa Center,
50 Liangmaqiao Road,
Chaoyang District,
Beijing 100125, China
+86 (0) 10 8424 3188
beijing@bonhams.com

Singapore

Bernadette Rankine
11th Floor, Wisma Atria
435 Orchard Road
Singapore 238877
+65 (0) 6701 8038
+65 (0) 6701 8001 fax
bernadette.rankine@bonhams.com

Taiwan

37th Floor, Taipei 101
Tower
No. 7 Xinyi Road,
Section 5
Taipei, 100
+886 2 8758 2898
+886 2 8758 2897 fax
taiwan@bonhams.com

EUROPE

Austria

Thomas Kamm
+49 (0) 89 2420 5812
austria@bonhams.com

Belgium

Boulevard
Saint-Michel 101
1040 Brussels
+32 (0) 2 736 5076
belgium@bonhams.com

France

4 rue de la Paix
75002 Paris
+33 (0) 1 42 61 10 10
paris@bonhams.com

Germany - Cologne

Katharina Schmid
+49 (0) 221 9865 3419
+49 (0) 157 9234 6717
cologne@bonhams.com

Germany - Hamburg

Marie Becker Lingenthal
+49 (0) 17 4236 0022
hamburg@bonhams.com

Germany - Munich

Maximilianstrasse 52
80538 Munich
+49 (0) 89 2420 5812
munich@bonhams.com

Germany - Stuttgart

Neue Brücke 2
New Bridge Offices
70173 Stuttgart
+49 (0) 711 2195 2640
+49 (0) 157 9234 6717
stuttgart@bonhams.com

Greece

7 Neofytou Vamva
Street
Athens 10674
+30 (0) 210 3636 404
athens@bonhams.com

Ireland

31 Molesworth Street
Dublin 2
+353 (0) 1 602 0990
ireland@bonhams.com

Italy - Milan

Via Boccaccio 22
20123 Milano
+39 0 2 4953 9020
milan@bonhams.com

Italy - Rome

Via Sicilia 50
00187 Roma
+39 06 485 900
rome@bonhams.com

The Netherlands

De Lairessestraat 154
1075 HL Amsterdam
+31 (0) 20 67 09 701
amsterdam@bonhams.com

Portugal

Rua Bartolomeu Dias
nº160. 1º
Belem
1400-031 Lisbon
+351 218 293 291
portugal@bonhams.com

Spain - Barcelona

Teresa Ybarra
+34 930 156 686
+34 680 347 606
barcelona@bonhams.com

Spain - Madrid

Núñez de Balboa no
4-1C
28001 Madrid
+34 915 78 17 27
madrid@bonhams.com

Switzerland - Geneva

Rue Etienne-Dumont 10
1204 Geneva
+41 (0) 22 300 3160
geneva@bonhams.com

Switzerland - Zurich

Andrea Bodmer
Dreikönigstrasse 31a
8002 Zürich
+41 44 281 9535
zurich@bonhams.com

NORTH AMERICA

USA

Representatives:
Arizona
Terri Adrian-Hardy
+1 (602) 859 1843
arizona@bonhams.com

California Central Valley

David Daniel
+1 (916) 364 1645
sacramento@bonhams.com

California Palm Springs

Brooke Sivo
+1 (760) 350 4255
palmsprings@bonhams.com

California San Diego

Brooke Sivo
+1 (760) 567 1744
sandiego@bonhams.com

Colorado

Lance Vigil
+1 (720) 355 3737
colorado@bonhams.com

Florida

April Matteini
+1 (305) 978 2459
Miami@bonhams.com
Alexis Butler
+1 (305) 878 5366
Miami@bonhams.com

Georgia

Mary Moore Bethea
+1 (404) 842 1500
georgia@bonhams.com

Illinois & Midwest

Natalie B. Waechter
+1 (773) 267 3300
Shawn Marsh
+1 (773) 680 2881
chicago@bonhams.com

Edinburgh

22 Queen Street
Edinburgh
EH2 1JX
+44 131 225 2266
+44 131 220 2547 fax

Los Angeles

7601 W. Sunset Boulevard
Los Angeles
CA 90046
+1 (323) 850 7500
+1 (323) 850 6090 fax

San Francisco

220 San Bruno Avenue
San Francisco
CA 94103
+1 (415) 861 7500
+1 (415) 861 8951 fax

Massachusetts

Amy Corcoran
+1 (617) 742 0909
boston@bonhams.com

Nevada

David Daniel
+1 (775) 831 0330
nevada@bonhams.com

New Mexico

Terri Adrian-Hardy
+1 (602) 859 1843
newmexico@bonhams.com

Oregon

Sheryl Acheson
+1 (971) 727 7797
oregon@bonhams.com

Texas – Dallas

Mary Holm
+1 (214) 557 2716
dallas@bonhams.com

Texas – Houston

Lindsay Davis
+1 (713) 855 7452
texas@bonhams.com

Virginia

Gertraud Hechl
+1 (202) 422 2733
virginia@bonhams.com

Washington

Heather O'Mahony
+1 (206) 566 3913
seattle@bonhams.com

**Washington DC
Mid-Atlantic Region**

Gertraud Hechl
+1 (202) 422 2733
washingtonDC@bonhams.com

Canada**Toronto, Ontario**

Kristin Kearney
340 King St East
2nd Floor, Office 213
Toronto ON
M5A 1K8
+1 (416) 462 9004
info.ca@bonhams.com

Montreal, Quebec

+1 (514) 209 2377
info.ca@bonhams.com

MIDDLE EAST**Israel**

Joslyne Halibard
+972 (0)54 553 5337
joslyne.halibard@bonhams.com

SOUTH AMERICA**Brazil**

+55 11 3031 4444
+55 11 3031 4444
fax

UNITED KINGDOM**South East
England****Guildford**

Millmead,
Guildford,
Surrey GU2 4BE
+44 1483 504 030
+44 1483 450 205
fax

Isle of Wight

+44 1273 220 000

Representative:

Brighton & Hove
Tim Squire-Sanders
+44 1273 220 000

West Sussex

+44 (0) 1273 220 000

**South West
England****Bath**

Queen Square House
Charlotte Street
Bath BA1 2LL
+44 1225 788 988
+44 1225 446 675
fax

Cornwall – Truro

36 Lemon Street
Truro
Cornwall
TR1 2NR
+44 1872 250 170
+44 1872 250 179
fax

Exeter

The Lodge
Southernhay West
Exeter, Devon
EX1 1JG
+44 1392 425 264
+44 1392 494 561
fax

Tetbury

Eight Bells House
14 Church Street
Tetbury
Gloucestershire
GL8 8JG
+44 1666 502 200
+44 1666 505 107
fax

Representatives:

Dorset
Matthew Lacey
+44 1935 815 271

**East Anglia and
Bury St. Edmunds**

Michael Steel
+44 1284 716 190

Norfolk

The Market Place
Reepham
Norfolk NR10 4JJ
+44 1603 871 443
+44 1603 872 973
fax

Midlands**Knowle**

The Old House
Station Road
Knowle, Solihull
West Midlands
B93 0HT
+44 1564 776 151
+44 1564 778 069
fax

Oxford

Banbury Road
Shipton on Cherwell
Kidlington OX5 1JH
+44 1865 853 640
+44 1865 372 722
fax

**Yorkshire & North
East England****Leeds**

The West Wing
Bowcliffe Hall
Bramham
Leeds
LS23 6LP
+44 113 234 5755
+44 113 244 3910
fax

North West England**Chester**

2 St Johns Court,
Vicars Lane,
Chester,
CH1 1QE
+44 1244 313 936
+44 1244 340 028
fax

Manchester

The Stables
213 Ashley Road
Hale WA15 9TB
+44 161 927 3822
+44 161 927 3824
fax

Channel Islands**Jersey**

La Chasse
La Rue de la Vallee
St Mary
Jersey JE3 3DL
+44 1534 722 441
+44 1534 759 354
fax

Representative:

Guernsey
+44 1481 722 448

Scotland**Bonhams West
of Scotland**

Kirkhill House
Broom Road East
Newton Mearns
Glasgow
G77 5LL
+44 141 223 8866

Wales**Representatives:**

Cardiff
Jeff Muse
+44 2920 727 980

Auction Registration Form

(Attendee / Absentee / Online / Telephone Bidding)
Please circle your bidding method above.

--	--	--	--

Paddle number (for office use only)

General Notice: This sale will be conducted in accordance with Bonhams Conditions of Sale, and your bidding and buying at the sale will be governed by such terms and conditions. Please read the Conditions of Sale in conjunction with the Buyer's Guide relating to this sale and other published notices and terms relating to bidding. Payment by personal or business check may result in your property not being released until purchase funds clear our bank. Checks must be drawn on a U.S. bank.

Notice to Absentee Bidders: In the table below, please provide details of the lots on which you wish to place bids at least 24 hours prior to the sale. Bids will be rounded down to the nearest increment. Please refer to the Buyer's Guide in the catalog for further information relating to instructions to Bonhams to execute absentee bids on your behalf. Bonhams will endeavor to execute bids on your behalf but will not be liable for any errors or non-executed bids.

Notice to First Time Bidders: New clients are requested to provide photographic proof of ID - passport, driving license, ID card, together with proof of address - utility bill, bank or credit card statement etc. Corporate clients should also provide a copy of their articles of association / company registration documents, together with a letter authorizing the individual to bid on the company's behalf. Failure to provide this may result in your bids not being processed. For higher value lots you may also be asked to provide a bankers reference.

Notice to online bidders; If you have forgotten your username and password for www.bonhams.com, please contact Client Services.

If successful

- I will collect the purchases myself
- Please contact me with a shipping quote (if applicable)
- I will arrange a third party to collect my purchase(s)

Please email or fax the completed Registration Form and requested information to:

Bonhams Client Services Department
7601 W. Sunset Blvd
Los Angeles, California 90046
Tel +1 (323) 850 7500
Fax +1 (323) 850 6090
bids.us@bonhams.com

Bonhams

Sale title: Lapidary Works of Art, Gemstones and Minerals		Sale date: Tuesday May 21, 2019	
Sale no. 25497		Sale venue: Los Angeles	
General Bid Increments:			
\$10 - 200by 10s		\$10,000 - 20,000by 1,000s	
\$200 - 500by 20 / 50 / 80s		\$20,000 - 50,000by 2,000 / 5,000 / 8,000s	
\$500 - 1,000by 50s		\$50,000 - 100,000by 5,000s	
\$1,000 - 2,000by 100s		\$100,000 - 200,000by 10,000s	
\$2,000 - 5,000by 200 / 500 / 800s		above \$200,000at the auctioneer's discretion	
\$5,000 - 10,000by 500s		The auctioneer has discretion to split any bid at any time.	
Customer Number		Title	
First Name		Last Name	
Company name (to be invoiced if applicable)			
Address			
City		County / State	
Post / Zip code		Country	
Telephone mobile		Telephone daytime	
Telephone evening		Fax	
Telephone bidders: indicate primary and secondary contact numbers by writing ① or ② next to the telephone number.			
E-mail (in capitals) _____			
By providing your email address above, you authorize Bonhams to send you marketing materials and news concerning Bonhams and partner organizations. Bonhams does not sell or trade email addresses.			
I am registering to bid as a private client <input type="checkbox"/>		I am registering to bid as a trade client <input type="checkbox"/>	
Resale: please enter your resale license number here _____ We may contact you for additional information.			

SHIPPING	
Shipping Address (if different than above):	
Address: _____	Country: _____
City: _____	Post/ZIP code: _____

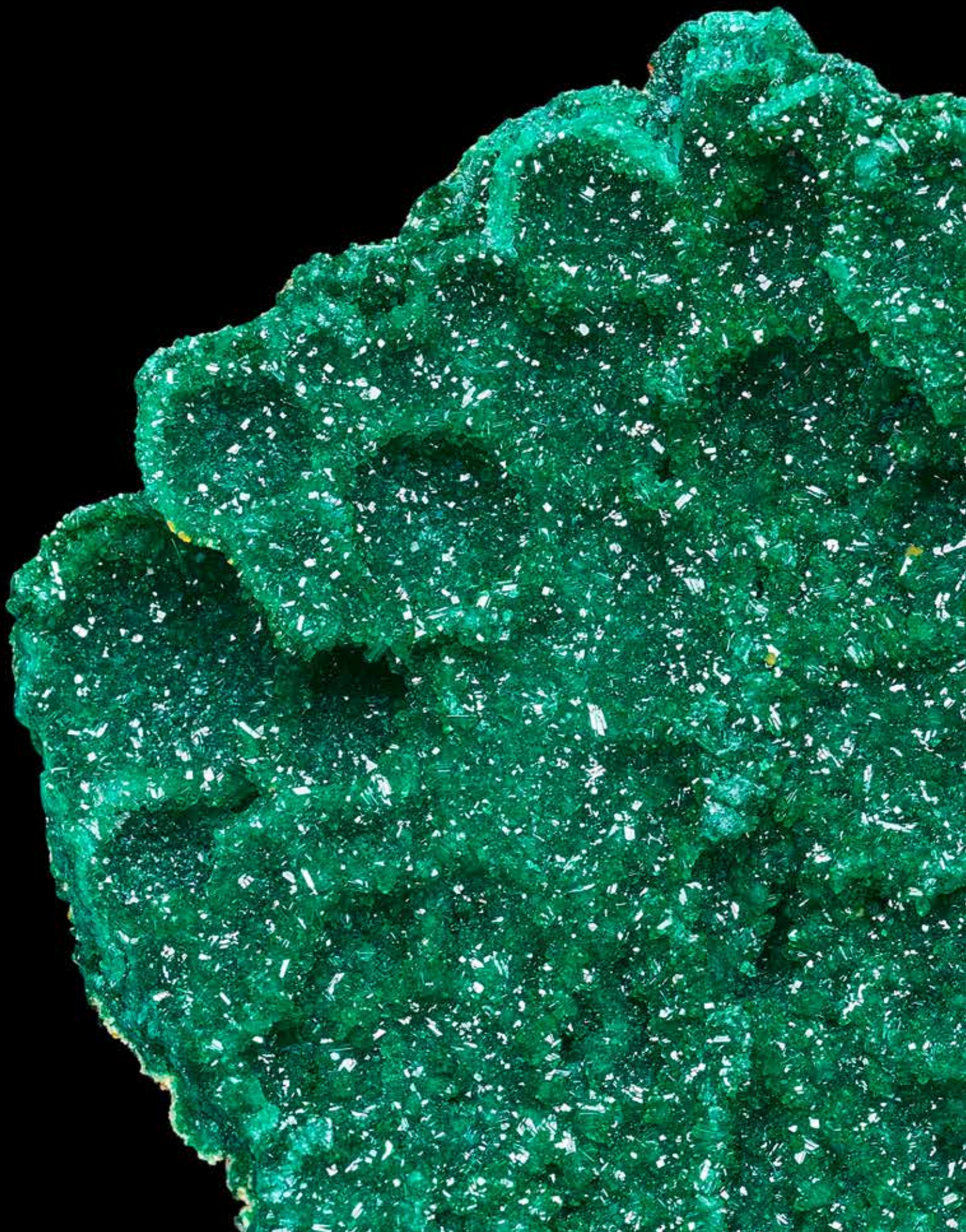
Please note that all telephone calls are recorded.

Type of bid (A-Absentee, T-Telephone)	Lot no.	Brief description (In the event of any discrepancy, lot number and not lot description will govern.) If you are bidding online there is no need to complete this section.	MAX bid in US\$ (excluding premium and applicable tax) Emergency bid for telephone bidders only*

You instruct us to execute each absentee bid up to the corresponding bid amount indicated above.

* Emergency Bid: A maximum bid (exclusive of Buyer's Premium and tax) to be executed by Bonhams only if we are unable to contact you by telephone or should the connection be lost during bidding.

BY SIGNING THIS FORM YOU AGREE THAT YOU HAVE READ AND UNDERSTAND OUR CONDITIONS OF SALE AND SHALL BE LEGALLY BOUND BY THEM, AND YOU AGREE TO PAY THE BUYER'S PREMIUM, ANY APPLICABLE TAXES, AND ANY OTHER CHARGES MENTIONED IN THE BUYER'S GUIDE OR CONDITIONS OF SALE. THIS AFFECTS YOUR LEGAL RIGHTS.	
Your signature: _____	Date: _____





Bonhams
7601 W. Sunset Boulevard
Los Angeles, California 90046

+1 323 850 7500
bonhams.com

AUCTIONEERS SINCE 1793